









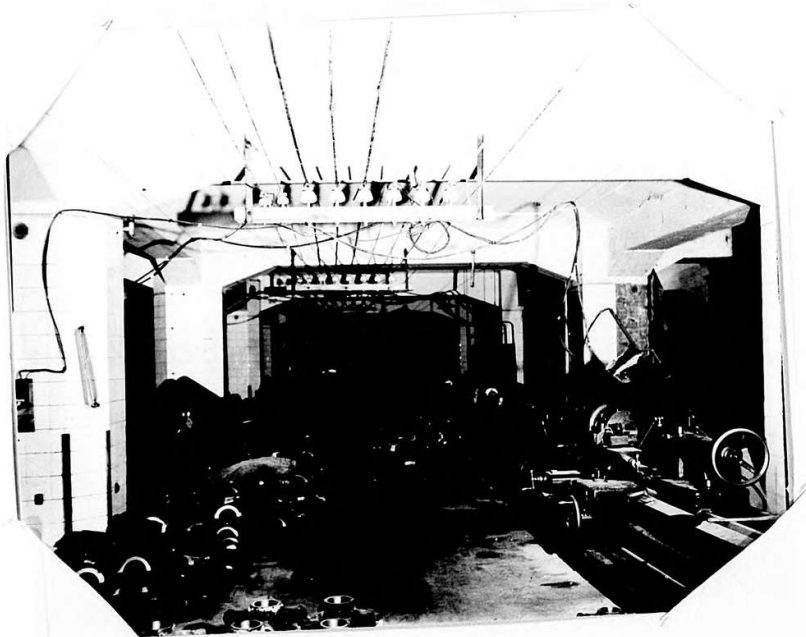


"APPENDIX ~~III~~"
D.



SOGO Department Store.
OSAKA

View of 2nd basement (B1)
showing 3 drills, one
miller, and stacks of
parts.



View of 3rd basement (B2)
showing lathes and
stacks of semifinished
parts.

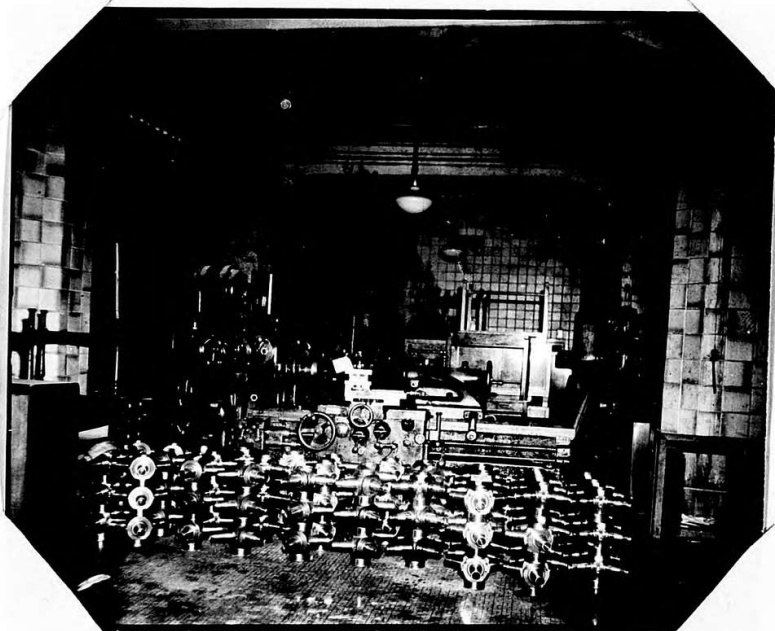
"APPENDIX ~~II~~
D.



SOGO Department Store.

Dispersal from the
SAKURAJIMA SEISAKUSHO

Two views showing
stacks of semifinished
and machined propeller
parts and lathes in the
second basement (B1)



5'x7"

"APPENDIX ~~11~~ 6.



EBISU KOJO.
Located in 2nd and 3rd
basements of the
MATSUZAKAYA Department
store.

Two views showing
bench milling machines
(above), and lathes
(below) located in the 3rd
basement (B2).



"APPENDIX ~~II~~"
D.



Elvis plant

~~SCG 100-1000~~
Located in 2nd and 3rd
basements of the
MATSUZAKAYA Department
store.

Two views of lathes
(upper) and outer
diameter grinders (lower)
located in the 2nd
basement (B1).



Sumitomo: Sakurajima Works.

"APPENDIX

~~11~~
~~12~~ E.

2306
A. Forsheim
J.M. Gettis.



SOGO Department Store, SHINSAIBASHI, OSAKA.

Northern and western facades.

Workers entrance to SUMITOMO propeller plant in
basements is located behind truck parked down
side alley.

"APPENDIX ~~III~~
D.



7" x 9"

~~EBISU~~ ~~EBISU~~ ~~EBISU~~ plant; located in the 2nd and 3rd
basements of the ~~MATSUZAKAYA~~ Department store.

Matsuzakaya

Dispersal site for machine shops from the
~~SAKURAJIMA SEISAKUSHO~~.

Sakurajima works

*Photograph shows western facade of the
Matsuzakaya Department store.*

