



KOBE-DAIREN LINER, S.S. "ORYOKU MARU"

O.S.K. LINE

丸 緑 鴨 船 絡 連 滿 日

JP 21-086

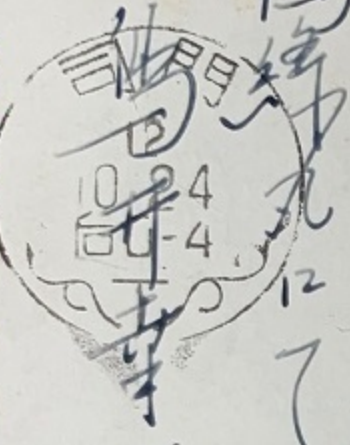


き が は 便 郵

也 田 川 本 公
敬 啓

余 長 崎 川 本 公
敬 啓

CARTE POSTALE



O.S.K. LINE 大 阪 商 船 株 式 會 社

鴨 船 丸 24 日 12 時 7 分 出 発
 貴 方 へ 送 付 申 上 せ ぬ 事 宜 宜 しく 願 へ ば 幸 甚 矣
 再 び 玄 海 を 越 之 て 征 途
 に 是 等 得 々 々 は 思 子 の
 心 懐 死 力 を 盡 盡 して
 奮 闘 申 上 せ ぬ 事 宜 宜 しく 願 へ ば 幸 甚 矣
 何 卒 出 身 出 方 切 切 には
 此 等 出 身 出 方 切 切 には
 此 等 出 身 出 方 切 切 には

On October 17, 1937, the Oryoku Maru owned by the Osaka Shosen (OSK line) K.K., begins her maiden voyage starting at KOBE, then goes to the port of MOJI, and from there sails to DAIREN in Manchukuo (Manchuria). This postcard is marked October 24, 1937, mailed from MOJI by passenger Mr. Sachio Torii before the Oryoku Maru leaves the waters of the Japanese home islands for the first time that day.

TO: Miss Ikeda Saku at Yagi-cho, Kashihara City, Nara Prefecture
 FROM: Mr. Sachio Torii on the Oryoku Maru
 (postmark): Moji City, October 24, 1937.

"Thank you very much for your kind sendoff on my departure today. Today I go on my second mission on the continent beyond the Genkai Sea for the second time. I will earnestly do my best. Please take care of your health as well."

Translation of the postcard courtesy of Mr. Yasuhiro Fukushima, born in Kyoto, Japan in 1937 who has this blog <http://y294ma.livedoor.blog/archives/17965797.html>



KOBE-DAIREN LINER, S.S. "ORYOKU MARU"

O.S.K. LINE

丸 綠 鴨 船 絡 連 滿 日

JP 21-086

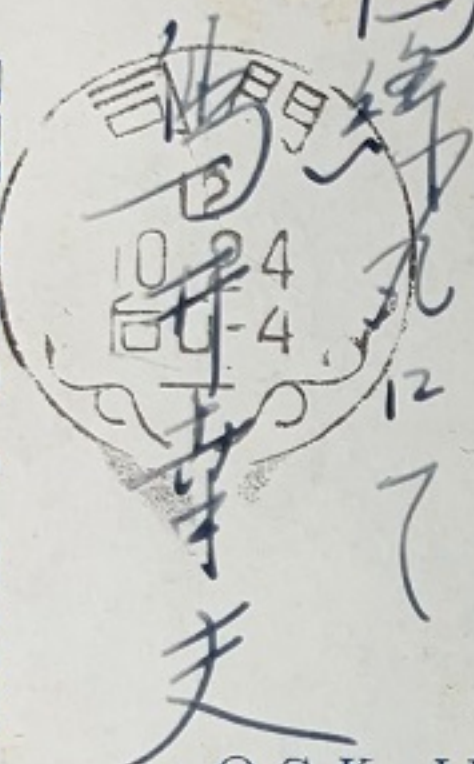
1944-Subic Bay

1937



CARTE POSTALE

郵便便がき

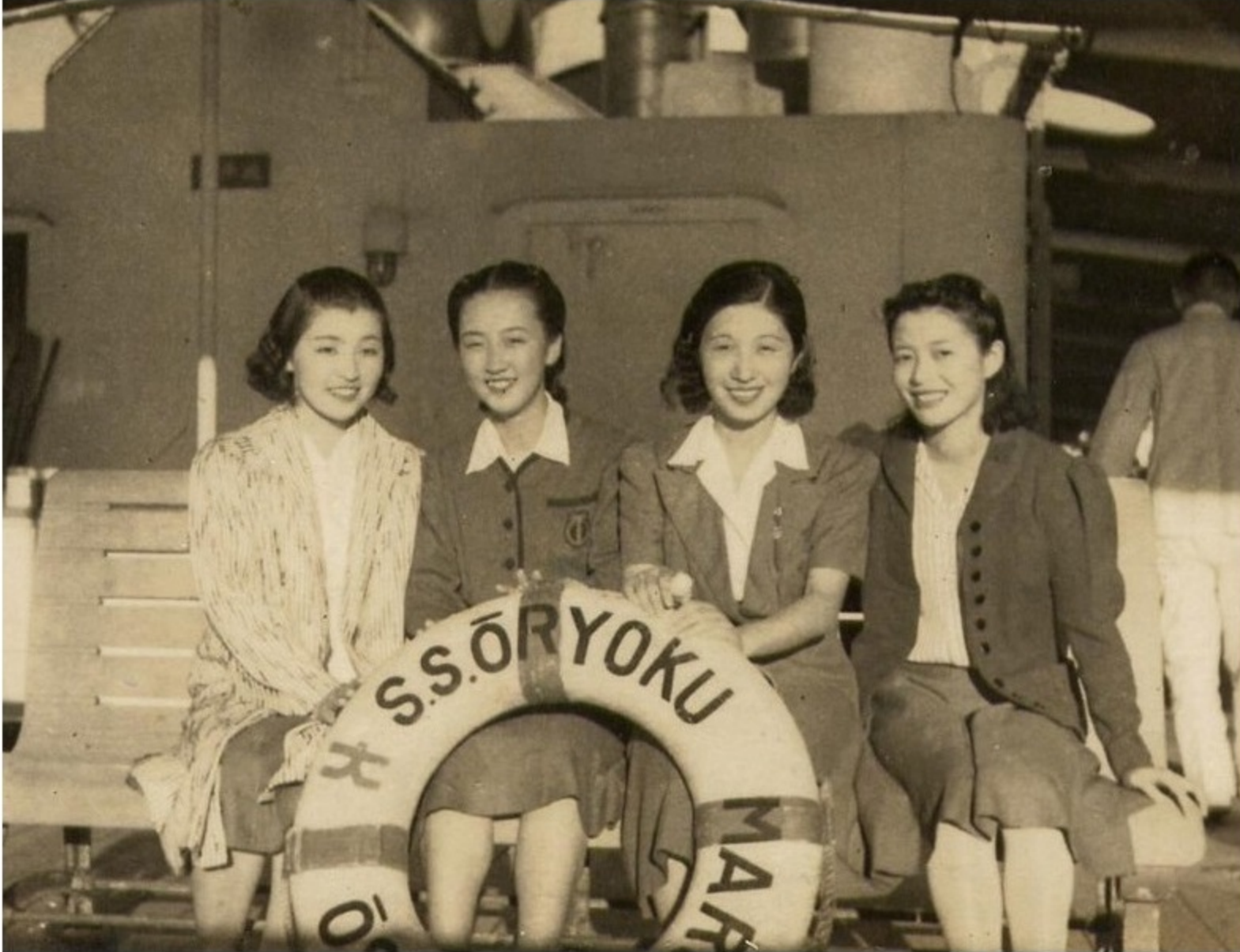


池田 敬

余女 菊川 本兵衛

O.S.K. LINE 大坂商船株式會社

手紙 貴方へ 敬愛の情 深謝し 再々海を越えて 行途 にも 得る 是は 懐 死力を 奮斗し 貴方へ



Hisako Kanehira far right, about 1938 to 1940 sailing on the Oryoku Maru with friends from the Takarazuka Review with life preserver.

























DECLASSIFIED

Authority: E.O. 13526

By: NDC NARA Date: Dec 31, 2012

CONFIDENTIAL

U.S.S. TICONDEROGA (CV-14)



PORO OIL STORAGE, SAN FERNANDO HARBOR

One large oil tank was burned out on 15 December by VF from Air Group 80. Ore bins are now burning from VF attack by Air Group 80 on 16 December.

42

War Theatre #18 (Philippine Islands) -
LANDINGS

Orig. 4x5 Neg and Print rec'd 9 July 1946
from Air Evaluation Board, SWPA, Orlando
Army Air Base, Orlando, Florida.



*Boats
Harbor
Supply dumps*

A30662

C-60758A.C.

INDEXED



AREA 18. PHILIPPINE ISLANDS - LUZON ISLAND - LA UNION - SAN FERNANDO.
App. Lat. $16^{\circ} 37'$ N. - Long. $120^{\circ} 18'$ E. Looking in a NW across dunes between N and
S harbors. Photo 1910. ONI (P-5) #328-524.

pre-war photo of dunes on San Fernando bay possibly east of the oil pier

Photo from the collection of the authors of the book about Lt Chester K Britt and others

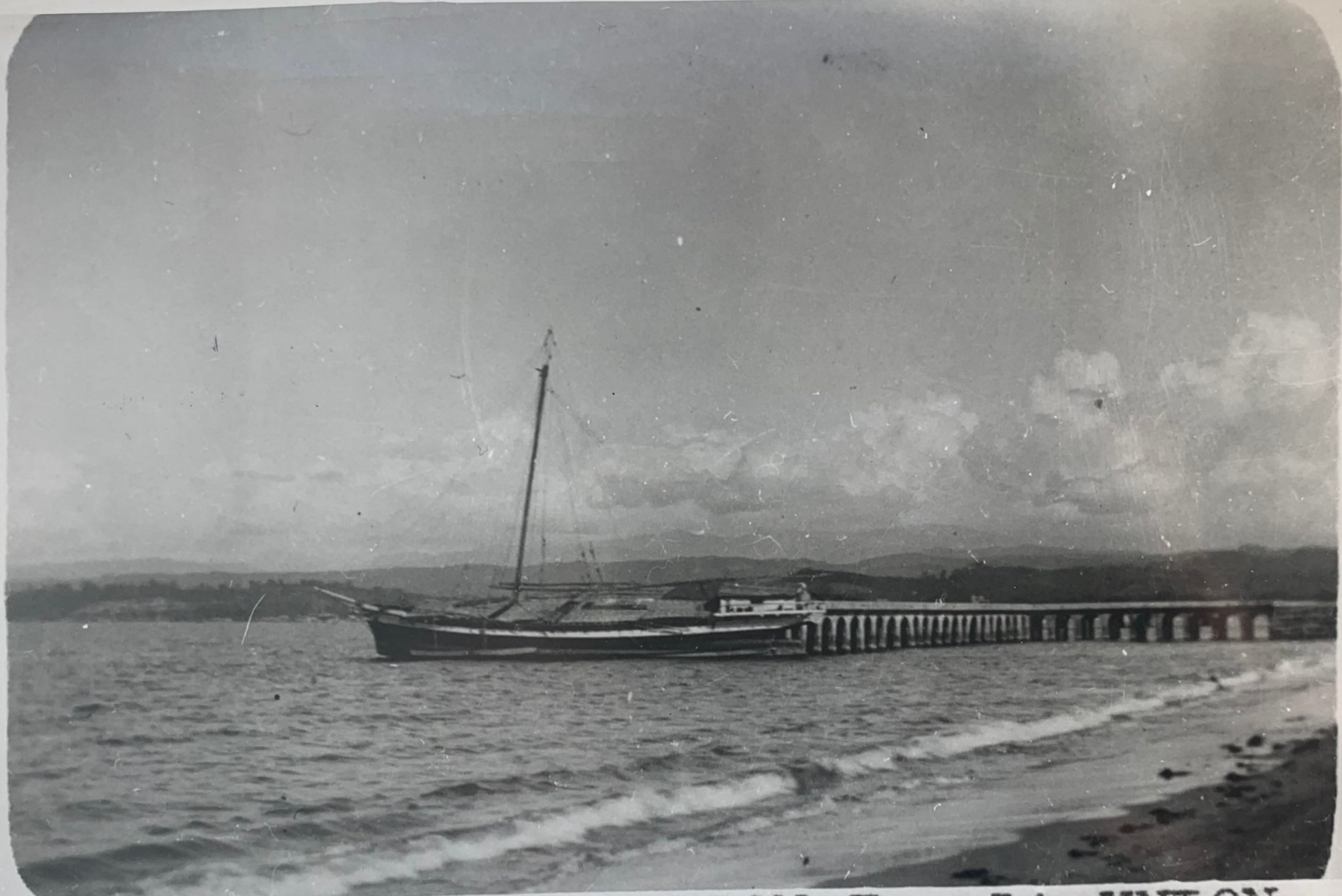
61843

C 5

Popcentury



Popcentury



9-9: AREA 18, P. I., LUZON I., LA UNION, SAN FERNANDO, App. $16^{\circ} 37' N$, $120^{\circ} 18' E$: E'erly view of pier seen in Photo 9-8. Horizon: hills behind San Fernando. 1931-1933.

A-18-PHILIPPINE IS.-LUZON I.-SAN FERNANDO-N1635 E12020-CONFIDENTIAL ✓
1671.387



1671387

Manila North Road, La Union Province: San Fernando, looking west toward Camp Wallace.
The new concrete pier is shown. K.303

N1635
E12020



AREA 18. PHILIPPINE ISLANDS - LUZON ISLAND - LA UNION PROV. -
PORO. App. Lat. 16° 34' N. - Long. 120° 17' E. The more westerly
of Poroc's two piers. 1938. Encl3S-6. ONI (P-5) #351-158.

Popcentury



Popcentury



**POWs were in
this beach area**



Poro Point

Oil Dock

**POWs jumped
or were
pushed into
barges from
here**



PHOTO M... Poro Point TARGET 9 Loading Pier and Oil Tanks at Poro, La Union Province, just SW of San Fernando. 1940 (Looking SW).

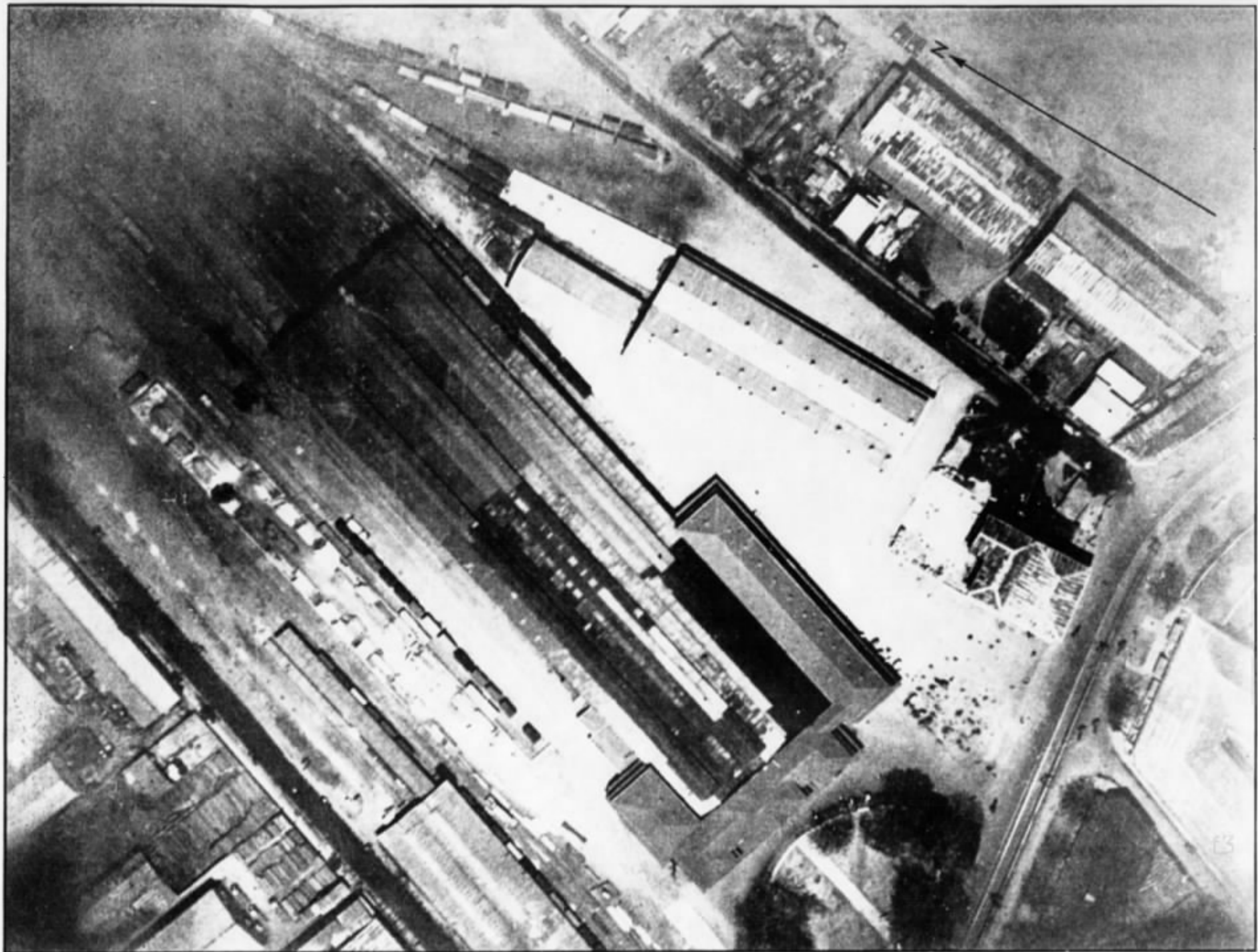


PHOTO L . . . Manila. TARGET 30 Tondo R.R. Station. Date unknown.



PHOTO M . . . Poro Point TARGET 9 Loading Pier and Oil Tanks at Poro, La Union Province, just SW of San Fernando. 1940 (Looking SW).

San Fernando Harbor

San Fernando City
San Fernando Station (defunct)

Boarded barges here for Enoura and Brazil Maru

Miramonte Beach Resort
men waited here for boarding Enoura and Brazil

approximate location of trade school

Lingayen Bay

4630 ft

Lingayen Gulf

© 2021 Google
Image © 2021 TerraMetrics
Data SIO, NOAA, U.S. Navy, NGA, GEBCO

Google Earth



C 6



ADMIRALTY
 PHOTOGRAPHIC LIBRARY
 Crown Copyright Reserved
 61844.

Area 6

LA UNION PROVINCE

SAN FERNANDO

Is. PACIFIC

1930

(U.S.A.)

Army Pier

ALLIED GEOGRAPHICAL SECTION,
 SOUTH WEST PACIFIC AREA

PHILIPPINE ISLANDS

LUZON ISLAND

16° 37' N. 120° 19' E. (approx)

G.B. (M.I.D.) N. Luzon W. Sheet

pre-war photo of men on L-shaped San Fernando La Union wharf

Photo from the collection of the authors of the book about Lt Chester K Britt and others