

III a (37)

SASEBO

66

TARGET NO. 90.36 NAME Sasebo ZONE 12

## CONTENTS

TARGET INFORMATION

J.T.G. Urban Area In 2010

AC/AS

OTHER REPORTS A-2 Target Info Sheet

MOSAIC ✓

[illegible]

CONFIDENTIAL

XXI BC 3PR5M 152

21 APRIL 1945

INTERPRON TWO-186.572B



33° 09' N. - 129° 43' E.

SASEBO, KYUSHU

90.36. SASEBO BAY

file Sasebo U/A

CONFIDENTIAL

NOT TO BE TAKEN  
INTO THE AIR ON  
COMBAT MISSIONS

TARGET: Sasebo Urban Industrial  
Area

OBJECTIVE AREA: 90.36

---

T A R G E T I N F O R M A T I O N S H E E T

---

SASEBO URBAN INDUSTRIAL AREA

Latitude: 33° 10' N  
Longitude: 129° 44' E  
Elevation: 20 Feet

1. SUMMARY COMMENT: One of Japan's four principal naval bases, Sasebo is important for the construction, repair and maintenance of naval vessels. In addition, it serves as defense base for the area, base port and defense headquarters for convoy escort throughout the East China Sea and down the Ryukyu Island chain to points south. It is also a supply base for the mainland/the naval administrative center for Kyushu.  
and
2. LOCATION AND IDENTIFICATION: Sasebo, the westernmost large city in Japan, lies at the head of Sasebo Bay. It is located just southeast of Tsushima Strait, which is off the NW tip of Kyushu, and guards the important narrows between Kyushu and Tsushima. It therefore commands the upper end of the East China Sea and the lower end of the Japan Sea. Sasebo Bay, which serves as a fleet anchorage, is very irregular in shape. There are two main inlets from the Bay. One extends due north and comprises the inner harbor with the city of Sasebo and the adjoining naval base at its northernmost tip. The other inlet extends NE. A channel on the SE side of Sasebo Bay is the only entrance to landlocked Omura Bay. The city is cut by three rivers: the Sasebo River which flows south and two smaller streams which parallel it on the east. Moderately steep hills hem in the naval base and the NE border of the city, but a small plain opens out to the north along the upper reaches of Sasebo River.
3. TARGET DESCRIPTION: Sasebo lies in a NW-SE direction along the shore of the bay and the lower valley of the Sasebo River. The residential section has expanded north, northeast and southwest, into the valleys of the streams which run through the city. The population of 206,000 is concentrated mainly in an area about 3 1/4 sq. miles (see Air Objective Folder 90.36-Sasebo). Average population density in this city is about 62,000 per sq. mile, with the heaviest population congestion in Zone I.

CONFIDENTIAL



CONFIDENTIAL

Although many of the buildings are of brick, concrete or of ferro-concrete construction, wood is the predominant structural material. Most of the residential section is built up in the regular Japanese hodge-podge fashion, with houses built close together and with no regular pattern of streets.

There are three adequate firebreaks in the city area and they divide it roughly into four sections. The Sasebo River is the widest and most effective, and the two streams running through the city to the east are also considered wide enough to halt the spread of fires. In the northern sections, the streams are not wide enough for firebreaks, but the ridges between them break the residential section into narrow corridors. There are no wide avenues in the city, and the streets in the commercial section are only of medium width.

The industries all lie along the waterfront area, and include an aircraft factory, a gas plant, a power station, the Sasebo Naval Dockyard, shipbuilding and ship repair plants, and minor industrial establishments.

4. IMPORTANCE: Sasebo is one of the four principal naval bases in Japan. It has all the facilities for servicing and repair of all types of naval units, and a harbor which can accommodate the fleet. The port also attracts many Japanese commercial ships.

Two miles SE of the city is an aircraft assembly plant, the Sasebo Aircraft Factory, Target 834. Sasebo is important, also, for its central situation with respect to the coal field on the peninsula north of the city.

TARGETS WITHIN THE FIRE ZONE:

- \* SASEBO RR STATION, YARDS, AND SHOPS - Moderately extensive yards and warehouses serving the Sasebo waterfront. Round house and secondary repair facilities.
- \* PROBABLE GAS WORKS - See Objective Folder 90.36 - Map M-13.

TARGETS OUTSIDE THE FIRE ZONE:

- 90.36-834 - SASEBO AIRCRAFT FACTORY - This plant has assembled some small naval observation planes and probably repairs and overhauls fleet aircraft. Several major buildings have been removed from the area, and it is believed the plant is being moved to Omura.

CONFIDENTIAL

- 90.36-754 - SASEBO NAVAL AIR STATION - Operational field for coastal patrol and fleet aircraft training and maintenance. Ten shop-type buildings, two small; three large hangars and one large sawtooth roof building. Shops and storehouses at north end.
- 90.36-757 - SASEBO MINE AND TORPEDO STORAGE - Located in NE corner of Harbor. Destruction of this storage would effect the operations of the destroyers and submarines from this base.
- 90.36-762 - SASEBO FUEL AND MUNITIONS DEPOT - Covers a large area between target 757 and 754. Northern portion includes several shop-type buildings, concrete magazines, storehouses and quays. Southern part includes 2 large underground fuel tanks, revetted magazines and underground storage in the hillsides. The Japs probably depend on this source for the supply of their operations from the base.
- 90.36-755 - SASEBO OIL STORAGE - Located on west side of Sasebo Bay about one mile south of the dock yards. Three separate tank farms, some with concrete walls, some underground. This is another source of fuel supply. Bunkering piers are nearby. Loss of this installation and Target 762 would severely cripple the movement of the fleet.
- 90.36-752 - SASEBO NAVAL DOCKYARD - One of three principal naval shipyards in Japan and a major fleet repair base. Has two building ways 600 ft. and one 350 ft. long drydocks big enough to accomodate the largest Jap naval vessel. Repair basin about 9 acres, accommodates 10-12 ships alongside. Concrete, granite-faced construction repair shops equipped for complete repair and maintenance.
- \*90.36-758 NAVAL ARSENAL AND ENGINEERING DEPT. - An integral part of the dockyard. Produces ships, engines, turbines, boilers, machinery, guns, gun mounts and shell casings. Principal function is repair work.
- \*90.36-845 SASEBO PROVISION WHARF - Large "U" -shaped dock at west edge of Sasebo river mouth. Congested with storehouses and shop-type buildings. Probably the main supply depot.

\* Partly inside the fire zone.

5. AIMING POINTS: Aiming points will be specified in the Field Order.

27 June 1945.

Target Section, A-2  
XXI Bomber Command

CONFIDENTIAL

CONFIDENTIAL

C. I. U.  
 TWENTIETH AIR FORCE  
 APO 234, c/o POSTMASTER  
 SAN FRANCISCO, CALIFORNIA

7 August 1945

DAMAGE ASSESSMENT REPORT 129

SASEBO-90.36-URBAN  
 36/10N - 129/44E

XXI Bom Com Mission 235, 29 June 1945 73rd Wing

SUMMARY OF DAMAGE

Built-up area: Sq.Mi. total - 2.34; Sq.Mi. destroyed - .97  
 Percent destroyed - 42

Planned target area: 2.0 sq.mi. Percent destroyed: 48

Total damage to date: .97 sq.mi. Percent of built-up area: 42

Targets damaged by current strike: 3 numbered; 2 other

Note: no previous damage

Damage within limits of built-up area:

Area damage from current strike:	Sq.Mi.	Destroyed	
		Sq.Mi.	Percent
Built-up area (Urban)	1.97	.93	47
Built-up area (Industrial)	.37	.04	11
Built-up area (Total)	2.34	.97	42

Damage to targets:

	Damage
90.36-752 Dockyard	5%
" 758 Naval Arsenal & Engineering Depot	25%
" 845 Provision Wharf	5%
Naval Barracks	25%
Military Barracks	50%

Damage outside built-up area (within 5 mile radius  
 of center of city):

None

Reference: AAF Air Objective Folder 90.36

Photos: Pre-strike: 3PR5M189-2: 28, 29 30 April 1945  
 Post-strike: 3PR5M312-2: 42-44 2 July 1945  
 3PR5M366-3: 58-61 29 July 1945

Inclosures: 1. Mosaic annotated to show damage  
 2. Post-strike print (3PR5M366-3: 59)

Approved: *R. L. D. B. ...*  
 HAMILTON D. DABBY,  
 MAJOR, AC

DISTRIBUTION: "B"

CONFIDENTIAL

CONFIDENTIAL

JUNE 1945

KEY  
Urban Built Up Area  
Industrial Built Up Area  
Sparsely Built Up Area  
Damaged

Damage Assessment Rpt 129

Basebo

90 36 - Urban

23 AF - Mission 235

June 1945

23 AF







POST STRIKE

DAMAGE ASSESSMENT RPT 129  
SASEBO-90.36 URBAN  
MISSION 235  
29 JUNE 1945  
C.I.U.-20 AF

1/2 Mile  
Scale

CONFIDENTIAL



Sasebo

S E C R E T

MISSION SUMMARY

Mission Number 235

6 July 1945

1. Date: 28 June 1945
2. Target: Sasebo Urban Area
3. Participating Unit: 73rd Bombardment Wing
4. Number A/C Airborne: 145
5. % A/C Bombing Primary: 95.68% (141 primary and 2 opportunity)
6. Type of Bombs and Fuzes: AN-M76 500# incendiary bombs, instantaneous nose and non-delay tail and M17A1, E-48 and E46 incendiary clusters set to open 5000 feet above target.
7. Tons of Bombs Dropped: 1058.9 on primary and 18.11 tons on opportunity.
8. Time Over Primary: 0137K - 0253K
9. Altitude of Attack: 10,100 - 11,700 feet
10. Weather Over Target: 9/10 - 10/10
11. Total A/C Lost: 0
12. Resume of Mission: Photo reconnaissance showed damage to area totalled .41 sq. miles or 17.9% of urban and industrial areas. One hundred thirty-five A/C bombed by radar and 6 visually. Flak was heavy and medium, meager to moderate and inaccurate. Nine E/A sighted made 1 attack. No claims. Two A/C were non-effective. Eight A/C landed at Iwo Jima. Average bomb load: 14,706 pounds. Average fuel reserve: 692 gallons.

S E C R E T



SASEBO AREA

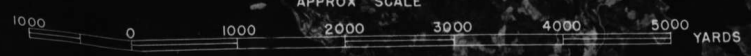
TARGET 90.36 URBAN  
33°09' N-129°45' E

ELEVATION 0-2000 FT (APPROX)  
APRIL 1945

A-2 SECTION  
XXI BOMBER COMMAND  
21ST PHOTO RCN SQ PHOTOS  
18 JUNE 1944  
PREPARED BY 949TH ENGR AVN TOPO CO

MAG DEC  
5°14' W  
ANNUAL  
CHANGE  
1' INC

APPROX SCALE



JOINT TARGET GROUP, WASHINGTON, D. C.  
URBAN AREA MOSAIC

# SASEBO — JAPAN

Clear Mosaic

RESTRICTED

ILLUSTRATION No. .... SASEBO-PM  
DATE ..... 21 May 1945

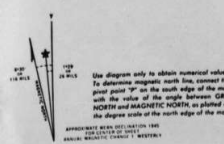
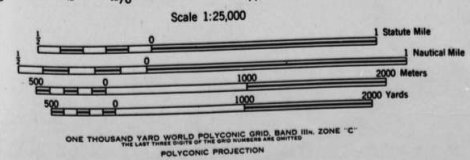


Holders of Joint Target Group Foldouts should insert this sheet in Air Tasking Order (ATO) and use it in conjunction with other Sasebo material.



Prepared under the direction of the Aeronautical Chart Service by Aero Service Corp., Phila., Pa. 1945. Revised: Controlled by revision R to latest available map source. Aerial photograph flown by A.S.A.F., June 1945. (Series): 4MC-39 24-V, 4MC-39 6-V.

Reliability of grid system due to local source disagreement between photo map and topographic map.



Published in Office of AC/AS Intelligence, A.A.F., by Combined Personnel of U.S. and British Services for the Use of Allied Forces.

SASEBO - PM





POPULATION  
206,000  
BUILT-UP AREA  
2.28 SQ. MI.  
PTA 2 SQ. MI.

SASEBO

MISSION NO	235				
DAMAGE	.41 SQ. MI. 17.9				
WINGS	73				
DATE	28 JUNE '45				
DAY/NIGHT	NIGHT				
BOMB TYPE	INCEND.				
AV. LOAD	14,706				
A/C AIRBORNE	145				
A/C BOMB. P.T.	141				
TONS ON P.T.	1058.9				
ALTITUDE	10,100-11,700				
BOMB. METH.	135R 6V				
CLAIMS	0				
LOSSES	0				

MITE - INST 258T  
M 17 - 5000' ABOVE 550T  
E 48 - " " 213T  
E 46 - " " 27T



CONFIDENTIAL

NOT TO BE TAKEN  
INTO THE AIR ON  
COMBAT MISSIONS

TARGET: Sasebo Urban Industrial  
Area  
OBJECTIVE AREA: 90.36

T A R G E T I N F O R M A T I O N S H E E T

SASEBO URBAN INDUSTRIAL AREA

Latitude: 33° 10' N  
Longitude: 129° 44' E  
Elevation: 20 Feet

1. SUMMARY COMMENT: One of Japan's four principal naval bases, Sasebo is important for the construction, repair and maintenance of naval vessels. In addition, it serves as defense base for the area; base port and defense headquarters for convoy escort throughout the East China Sea and down the Ryukyu Island chain to points south. It is also a supply base for the mainland/the naval administrative center for Kyushu.
2. LOCATION AND IDENTIFICATION: Sasebo, the westernmost large city in Japan, lies at the head of Sasebo Bay. It is located just southeast of Tsushima Strait, which is off the NW tip of Kyushu, and guards the important narrows between Kyushu and Tsushima. It therefore commands the upper end of the East China Sea and the lower end of the Japan Sea. Sasebo Bay, which serves as a fleet anchorage, is very irregular in shape. There are two main inlets from the Bay. One extends due north and comprises the inner harbor with the city of Sasebo and the adjoining naval base at its northernmost tip. The other inlet extends NE. A channel on the SE side of Sasebo Bay is the only entrance to landlocked Omura Bay. The city is cut by three rivers: the Sasebo River which flows south and two smaller streams which parallel it on the east. Moderately steep hills hem in the naval base and the NE border of the city, but a small plain opens out to the north along the upper reaches of Sasebo River.
3. TARGET DESCRIPTION: Sasebo lies in a NW-SE direction along the shore of the bay and the lower valley of the Sasebo River. The residential section has expanded north, northeast and southwest, into the valleys of the streams which run through the city. The population of 206,000 is concentrated mainly in an area about 34 sq. miles (see Air Objective Folder 90.36-Sasebo). Average population density in this city is about 62,000 per sq. mile, with the heaviest population congestion in Zone I.

CONFIDENTIAL

Although many of the buildings are of brick, concrete or of ferro-concrete construction, wood is the predominant structural material. Most of the residential section is built up in the regular Japanese hodge-podge fashion, with houses built close together and with no regular pattern of streets.

There are three adequate firebreaks in the city area and they divide it roughly into four sections. The Sasebo River is the widest and most effective, and the two streams running through the city to the east are also considered wide enough to halt the spread of fires. In the northern sections, the streams are not wide enough for firebreaks, but the ridges between them break the residential section into narrow corridors. There are no wide avenues in the city, and the streets in the commercial section are only of medium width.

The industries all lie along the waterfront area, and include an aircraft factory, a gas plant, a power station, the Sasebo Naval Dockyard, shipbuilding and ship repair plants, and minor industrial establishments.

4. IMPORTANCE: Sasebo is one of the four principal naval bases in Japan. It has all the facilities for servicing and repair of all types of naval units, and a harbor which can accommodate the fleet. The port also attracts many Japanese commercial ships.

Two miles SE of the city is an aircraft assembly plant, the Sasebo Aircraft Factory, Target 834. Sasebo is important, also, for its central situation with respect to the coal field on the peninsula north of the city.

TARGETS WITHIN THE FIRE ZONE:

- \* SASEBO RR STATION, YARDS, AND SHOPS - Moderately extensive yards and warehouses serving the Sasebo waterfront. Round house and secondary repair facilities.
- \* PROBABLE GAS WORKS - See Objective Folder 90.36 - Map M-13.

TARGETS OUTSIDE THE FIRE ZONE:

90.36-834 - SASEBO AIRCRAFT FACTORY - This plant has assembled some small naval observation planes and probably repairs and overhauls fleet aircraft. Several major buildings have been removed from the area, and it is believed the plant is being moved to Omura.

CONFIDENTIAL

- 90.36-754 - SASEBO NAVAL AIR STATION - Operational field for coastal patrol and fleet aircraft training and maintenance. Ten shop-type buildings, two small; three large hangars and one large sawtooth roof building. Shops and storehouses at north end.
- 90.36-757 - SASEBO MINE AND TORPEDO STORAGE - Located in NE corner of Harbor. Destruction of this storage would effect the operations of the destroyers and submarines from this base.
- 90.36-762 - SASEBO FUEL AND MUNITIONS DEPOT - Covers a large area between target 757 and 754. Northern portion includes several shop-type buildings, concrete magazines, storehouses and quays. Southern part includes 2 large underground fuel tanks, revetted magazines and underground storage in the hillsides. The Japs probably depend on this source for the supply of their operations from the base.
- 90.36-755 - SASEBO OIL STORAGE - Located on west side of Sasebo Bay about one mile south of the dock yards. Three separate tank farms, some with concrete walls, some underground. This is another source of fuel supply. Bunkering piers are nearby. Loss of this installation and Target 762 would severely cripple the movement of the fleet.
- 90.36-752 - SASEBO NAVAL DOCKYARD - One of three principal naval shipyards in Japan and a major fleet repair base. Has two building ways 600 ft. and one 350 ft. long drydocks big enough to accommodate the largest Jap naval vessel. Repair basin about 9 acres, accommodates 10-12 ships alongside. Concrete, granite-faced construction repair shops equipped for complete repair and maintenance.
- \*90.36-758 NAVAL ARSENAL AND ENGINEERING DEPT. - An integral part of the dockyard. Produces ships, engines, turbines, boilers, machinery, guns, gun mounts and shell casings. Principal function is repair work.
- \*90.36-845 SASEBO PROVISION WHARF - Large "U" -shaped dock at west edge of Sasebo River mouth. Congested with storehouses and shop-type buildings. Probably the main supply depot.

\* Partly inside the fire zone.

5. AIMING POINTS: Aiming points will be specified in the Field Order.

27 June 1945.

Target Section, A-2  
XXI Bomber Command

CONFIDENTIAL

S E C R E T

MISSION SUMMARY

Mission Number 235

6 July 1945

1. Date: 28 June 1945
2. Target: Sasebo Urban Area
3. Participating Unit: 73rd Bombardment Wing
4. Number A/C Airborne: 145
5. % A/C Bombing Primary: 95.88% (141 primary and 2 opportunity)
6. Type of Bombs and Fuzes: AN-M76 500# incendiary bombs, instantaneous nose and non-delay tail and M17A1, E-48 and E46 incendiary clusters set to open 5000 feet above target.
7. Tons of Bombs Dropped: 1058.9 on primary and 18.11 tons on opportunity.
8. Time Over Primary: 0137K - 0253K
9. Altitude of Attack: 10,100 - 11,700 feet
10. Weather Over Target: 9/10 - 10/10
11. Total A/C Lost: 0

12. Resume of Mission: Photo reconnaissance showed damage to area totalled .41 sq. miles or 17.9% of urban and industrial areas. One hundred thirty-five A/C bombed by radar and 6 visually. Flak was heavy and medium, meager to moderate and inaccurate. Nine E/A sighted made 1 attack. No claims. Two A/C were non-effective. Eight A/C landed at Iwo Jima. Average bomb load: 14,706 pounds. Average fuel reserve: 692 gallons.

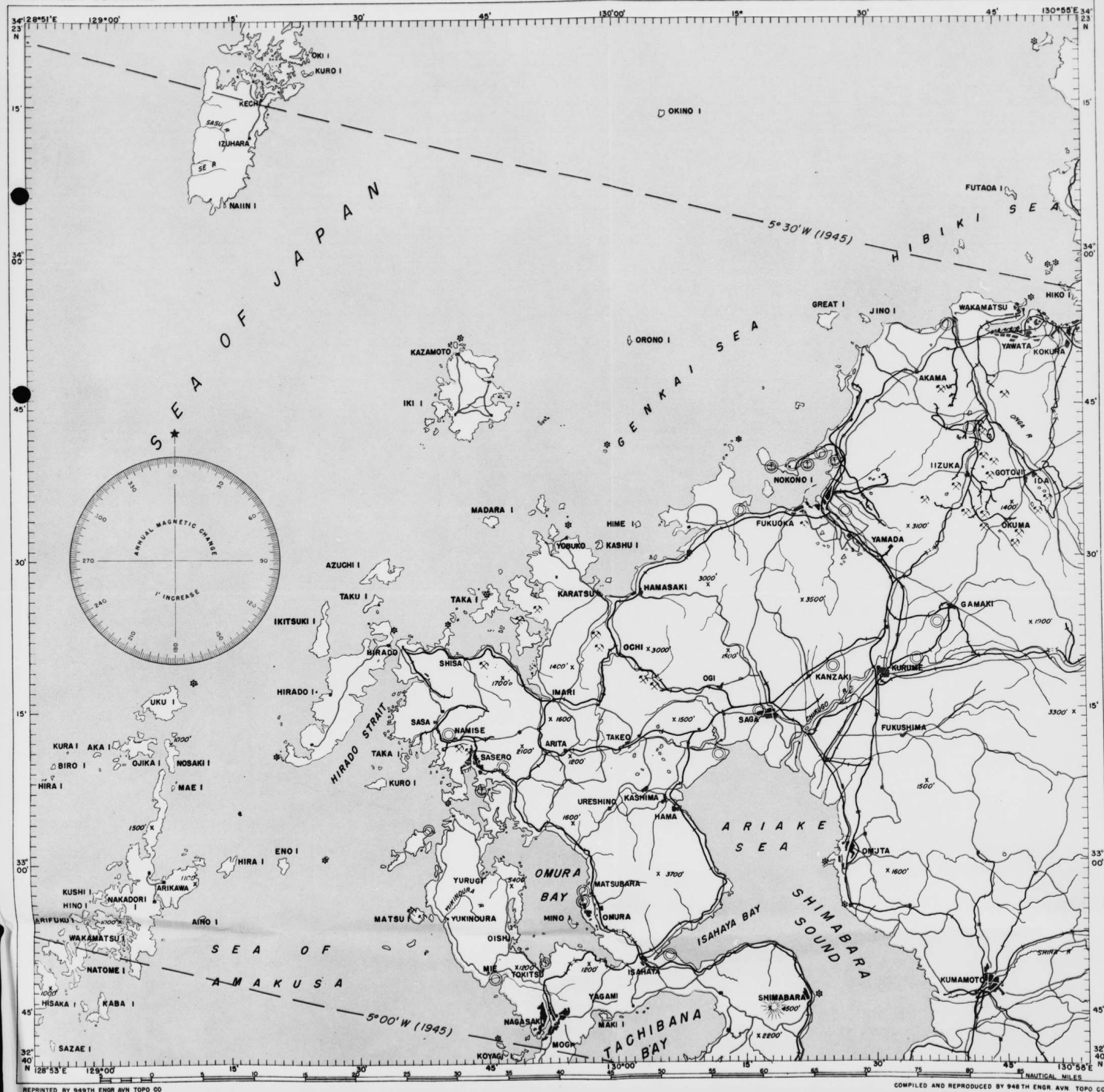
S E C R E T



TARGET UNIT, INTELL. SEC.  
XX BOMBER COMMAND

# FUKUOKA AREA NOVEMBER 1944

CHART NO. 39  
RESTRICTED

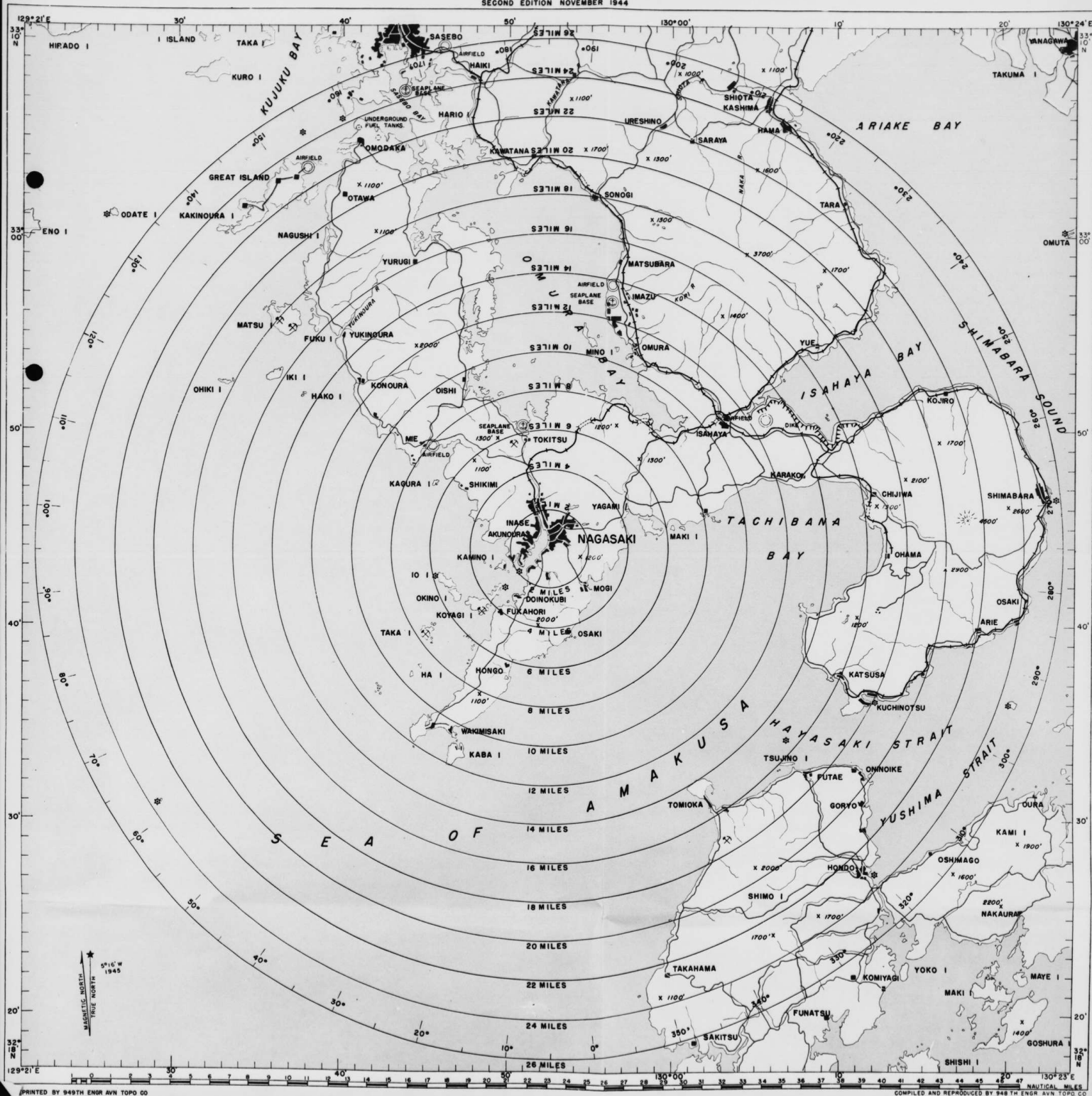




TARGET UNIT, INTELL. SEC.  
XX BOMBER COMMAND

**NAGASAKI AREA**  
URBAN, (32°44' N-129°52'30" E), ELEV. 20 FEET  
ALL DISTANCES ARE IN NAUTICAL MILES  
SECOND EDITION NOVEMBER 1944

TARGET CHART NO. 22  
RESTRICTED



TARGET UNIT, INTELL. SEC.  
XX BOMBER COMMAND

MARCH 1945

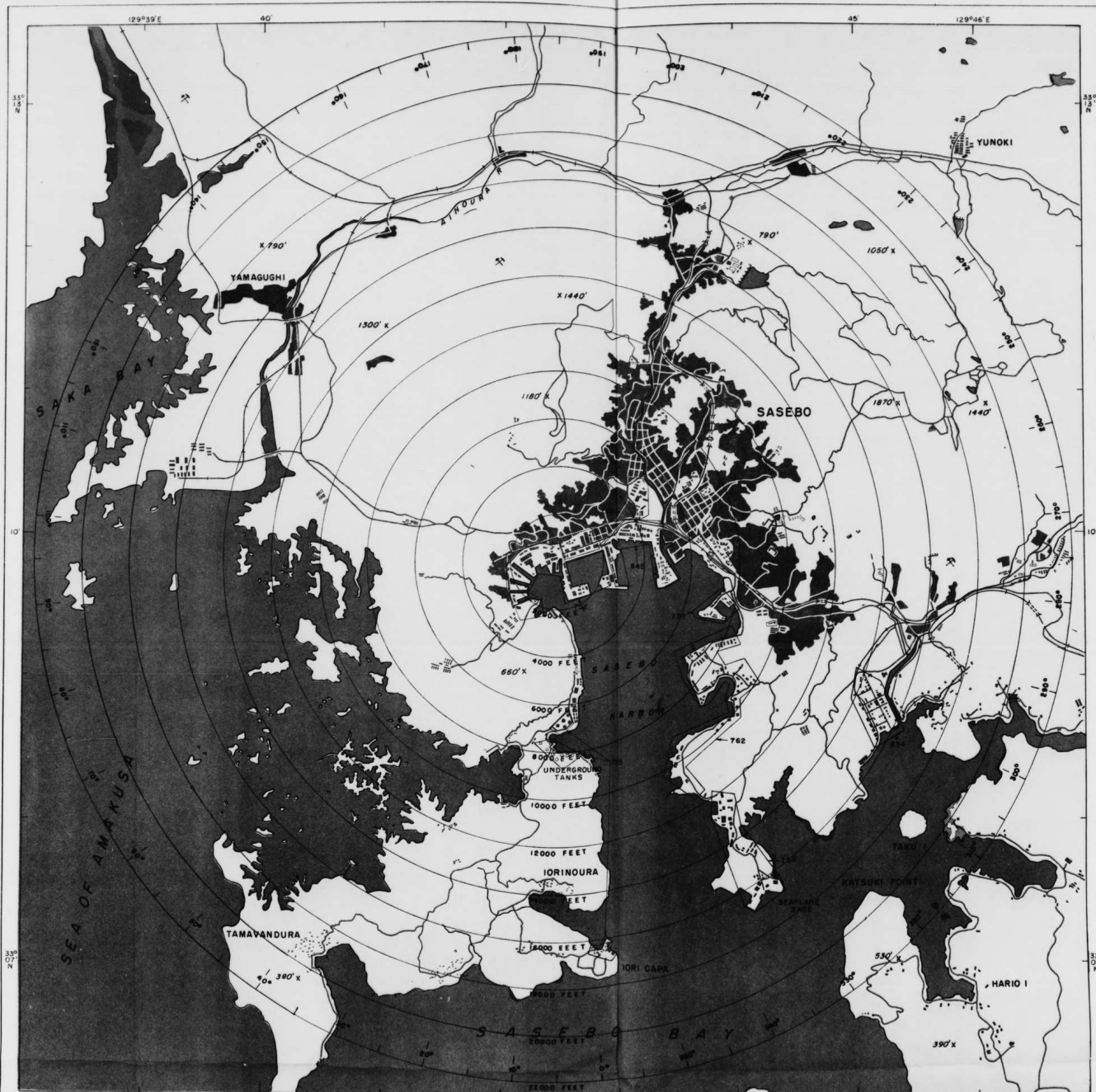
# SASEBO AREA

SASEBO NAVAL DOCKYARD  
TARGET NO 90 36-752

SECOND EDITION

TARGET CHART NO 20-A  
RESTRICTED

SCALE 1:40,000



NO	DESIGNATION	ELEV.
752	SASEBO NAVAL DOCKYARD	20'
754	SASEBO NAVAL AIR STATION	25'
755	SASEBO OIL STORAGE	20'
757	SASEBO MINE AND TORPEDO STORAGE	20'
758	NAVAL ARSENAL & ENGINEERING DEPT	30'
762	SASEBO FUEL & MUNITIONS DEPOT	30'
834	SASEBO AIRCRAFT FACTORY	30'
845	SASEBO PROVISION WHARF	25'

COMPILED FROM: JAF TARGET CHART NO 90 36-752, FEB 1944; 21ST PHOTO. RECN. SODN  
PHOTOS, JUNE 1944 & OCT. 1945; 462ND BOMB GROUP PHOTOS, NOV. 1944.



COMPASS ROSE INDICATES  
MAGNETIC BEARING TOWARD  
THE TARGET.

ANNUAL MAGNETIC  
CHANGE: +2 INCREASE  
MV 5°10' W (1945)

COMPILED AND REPRODUCED BY 948 TH ENGR AVN TOPO. CO.











CONFIDENTIAL

C. I. U.  
TWENTIETH AIR FORCE  
APO 234, c/o POSTMASTER  
SAN FRANCISCO, CALIFORNIA

7 August 1945

DAMAGE ASSESSMENT REPORT 129

SASEBO-90.36-URBAN  
36/10N - 129/44E

XXI Bom Com Mission 235, 29 June 1945 73rd Wing

SUMMARY OF DAMAGE

Built-up area: Sq.Mi. total - 2.34; Sq.Mi. destroyed - .97

Percent destroyed - 42

Planned target area: 2.0 sq.mi. Percent destroyed: 48

Total damage to date: .97 sq.mi. Percent of built-up area: 42

Targets damaged by current strikes: 3 numbered; 2 other

Note: no previous damage

Damage within limits of built-up area:

<u>Area damage from current strike:</u>	<u>Sq.Mi.</u>	<u>Destroyed</u>	
		<u>Sq.Mi.</u>	<u>Percent</u>
Built-up area (Urban)	1.97	.93	47
Built-up area (Industrial)	.37	.04	11
Built-up area (Total)	2.34	.97	42

Damage to targets:

	<u>Damage</u>
90.36-752 Dockyard	5%
" 758 Naval Arsenal & Engineering Depot	25%
" 845 Provision Wharf	5%
Naval Barracks	25%
Military Barracks	50%

Damage outside built-up area (within 5 mile radius of center of city): None

Reference: AAF Air Objective Folder 90.36

Photos: Pre-strike: 3PR5M180-2: 28, 29 30 April 1945  
Post-strike: 3PR5M312-2: 42-44 2 July 1945  
3PR5M366-3: 58-61 29 July 1945

Inclosures: 1. Mosaic annotated to show damage  
2. Post-strike print (3PR5M366-3: 59)

Approved: *R. H. D. B. ...*  
HAMILTON D. DARBY,  
MAJOR, AC

DISTRIBUTION: "B"

CONFIDENTIAL

CONFIDENTIAL

JUNE 1945

KEY

- Urban Built Up Area
- Industrial Built Up Area
- Sparsely Built Up Area
- Damage

Damage Assessment Rpt 129

Saseba

9036-Urban

23 AF-Mission 235

29 June 1945

20 AF





POST STRIKE

DAMAGE ASSESSMENT RPT 129  
SASEBO-90.36 URBAN  
MISSION 235  
29 JUNE 1945  
CLU-20 AF

1/2 Mile  
Scale

CONFIDENTIAL

Kent

CONFIDENTIAL

C. I. U.  
XXI BOMBER COMMAND  
APO 234, c/o POSTMASTER  
SAN FRANCISCO, CALIFORNIA

2 July 1945

SHIPPING REPORT NO. 32

90.36  
SASEBO HARBOR

Mission No.: 23PR5MA180  
Date: 20 June 1945

Naval: 35

Merchant: 3 (9,780 G.T.)

1 DD 16 SS (4 building)  
1 ODD 3 AM  
4 DE 1 CM  
1 APD 2 Escort (building)  
3 PF 2 LST  
1 PC

1 FTD  
1 SAS  
1 SBS

Last complete coverage 23 May 1945,  
CIU Shipping Report No. 13.

Arrivals: 12

Departures: 8

2 AM 2 LST  
1 APD 1 PC  
4 SS 2 Escort

3 DD 1 SCL  
1 OCA 2 SCS  
1 FTD

TABULATION OF SHIPPING

NAVAL

Location	Type	Length	Remarks
1	CM	250'	Sokuten class
2	DE	255'	UN-I class
3	ODD	287'	Kuri-Wakatake class
4	APD	315'	
5	LST	264'	
6	AM	235'	No. 13 class
7	PC	170'	PC 13 class
8	DD	435'	Terutsuki class
9	AM	235'	No. 13 class
10	PF	220'	Kaibokan class
11	SS	150'-160'	Fitting
12	SS	150'-160'	"
13	SS	150'-160'	"
14	SS	150'-160'	"
15	SS	150'-160'	"
16	SS	150'-160'	"
17	LST	264'	"
18	DE	255'	UN-I Class, fitting
19	DE	255'	UN-I Class, fitting
20	SS	230'-240'	Fitting
21	SS	340'-350'	"
22	DE	255'	UN-I Class, fitting
23	AM	235'	Sokuten Class, fitting
24	PF	220'	Kaibokan class
25	SS	160'-170'	In graving dock
26	Escort	235'	On ways, nearing completion
27	"	235'	Building
28	SS	140'-150'	On ways, nearing completion
29	SS	140'-150'	" " " "
30	SS		
31	SS	140'-150'	Keel laid, building
32	PF	220'	On ways, nearing completion
33	SS	230'-240'	In graving dock
34	SS	390'-400'	" " "
35	SS	160'-170'	" " "

CONFIDENTIAL



CONFIDENTIAL

Shipping Report No. 32, cont'd.

MERCHANT

Location	Type	Length	Tonnage	Remarks
A	SAS	210'	880	Type TS
B	FTB	454'	7000	Kooi Maru Class
C	SES	230'	1900	Amakasu Maru No. 1 Class

References: ONI 208-J (revised) - no date  
 ONI 208-J (revised) - Supplement 3 January 1945  
 ONI 222-J July 1944

Photo reference: 24" - 1: 7-13, 15-20

Inclosure: Annotated harbor plan

Approved

*Richard C. Baer*  
 HAMILTON D. DARBY  
 MAJOR, AC *Cgt A*

DISTRIBUTION: "B"

CONFIDENTIAL

CONFIDENTIAL



SHIPPING REPORT 32  
SASEBO HARBOR  
MISSION 28PR5MA180  
20 JUNE 1945  
C.I.U. XXI BOM. COM.

35PTU 7-21-51

CONFIDENTIAL

Kent

C. I. U.  
XXI BOMBER COMMAND  
APO 234, c/o POSTMASTER  
S.F. FRANCISCO, CALIFORNIA

5 July 1945

SHIPPING REPORT NO. 34

SASEBO HARBOR

Mission No.: 3PR5A 312

Target Area: Sasebo (90.36)

Date Flown: 2 July 1945

Airplane Commander: W. L. Voris,  
1st Lt, AC

NV: 27

MV:

2 CV  
1 CVL  
1 DD  
2 DE  
1 ODD  
1 APD  
5 PF  
2 CM  
2 LST  
1 PC  
3 SS  
1 ESCORT, building

1 FTC; 1,300 G.T.

ARRIVALS: 2

DEPARTURES: 15

2 PF

2 DE  
3 SS  
1 AM  
1 ESCORT (last reported on ways)  
1 FTB  
1 SAS  
1 SDS

NAVAL:

LOCATION	TYPE	LENGTH	REMARKS
1	SS	220'/230'	
2	PF	220'	Kaiboken class
3	LST	264'	
4	ODD	267'	Kuri-Wakatake class
5	LST	264'	
6	APD	315'	
7	PF	220'	Kaiboken class
8	SS	230'/240'	
9	PC	170'	No. 13 class
10	SS	150'/160'	
11	SS	150'/160'	
12	PF	220'	Kaiboken class
13	CM	250'	Sokoten class
14	CM	250'	Probably Sokoten class
15	PF	220'	Kaiboken class
16	SS	145'/155'	In drydock
17	Escort		Building on ways
18	SS	160'/170'	On ways
19	SS		Building on ways.
20	SS	140'/150'	In drydock
21	PF	220'	In drydock
22	DE	255'	UN-1 class
23	DD	435'	Terutsuki class, in drydock
24	DE	255'	UN-1 class, in drydock

CONFIDENTIAL

CONFIDENTIAL

Shipping Report 34 - Con't.

Note: Not included in the above listing or on the attached harbor plan are the following: 2-CV, AMAGI and KASAGI; and 1-CVL, IDUKI. All carriers are camouflaged and anchored in SASEDO OUTER HARBOR near HARIO ISLAND.

MERCHANT:

LOCATION	TYPE	LENGTH	TONNAGE
A	FTC	235'	1300

References: ONI 222-J; July 1944  
 ONI 208-J, (Revised) Supplement 3 January 1945

Reference photos: 2: 36-44  
 Inclosure: 1 Harbor Plan.

Approved.

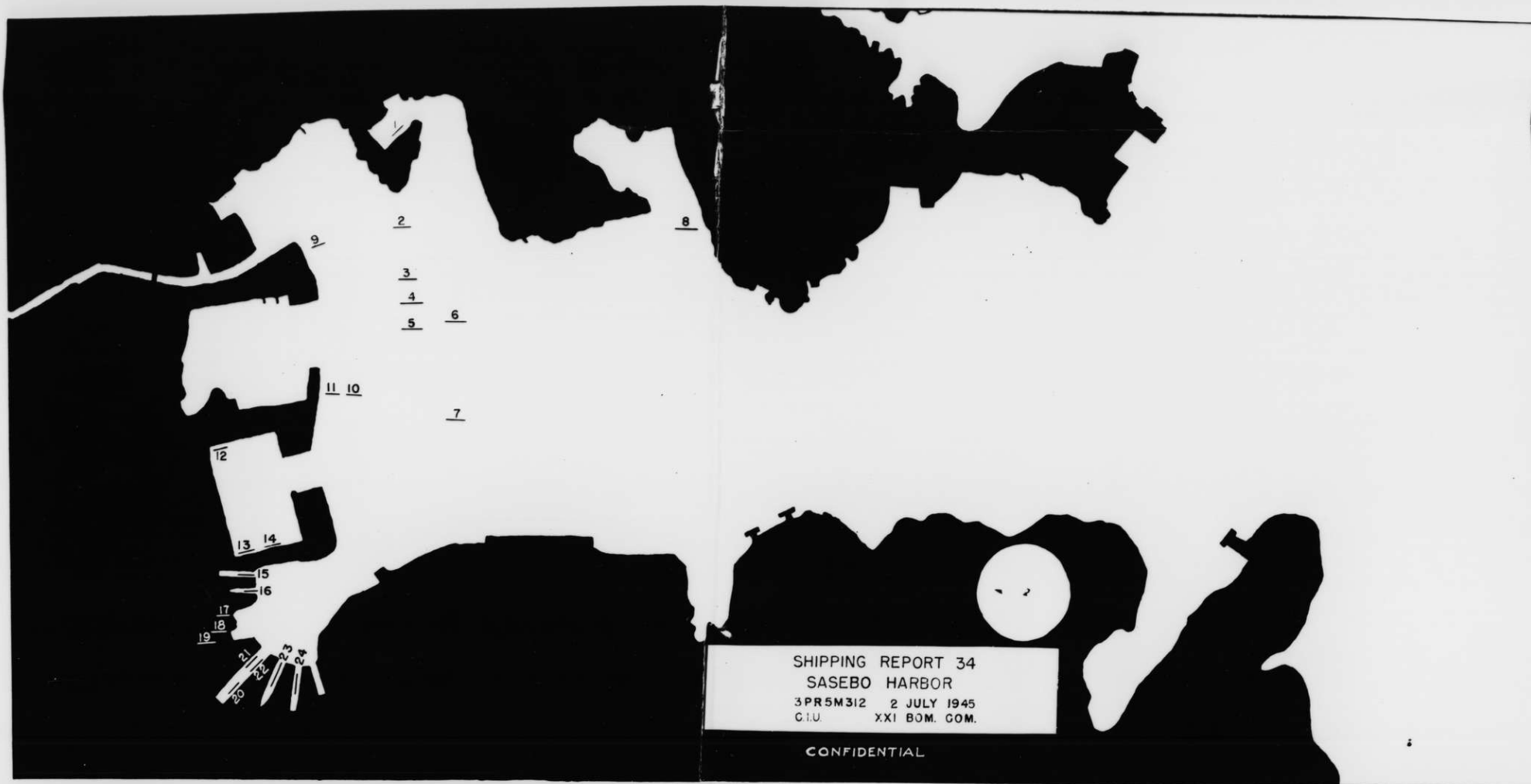
FOR

HAMILTON D. DABBY  
 MAJOR, AC

DISTRIBUTION "D"

CONFIDENTIAL



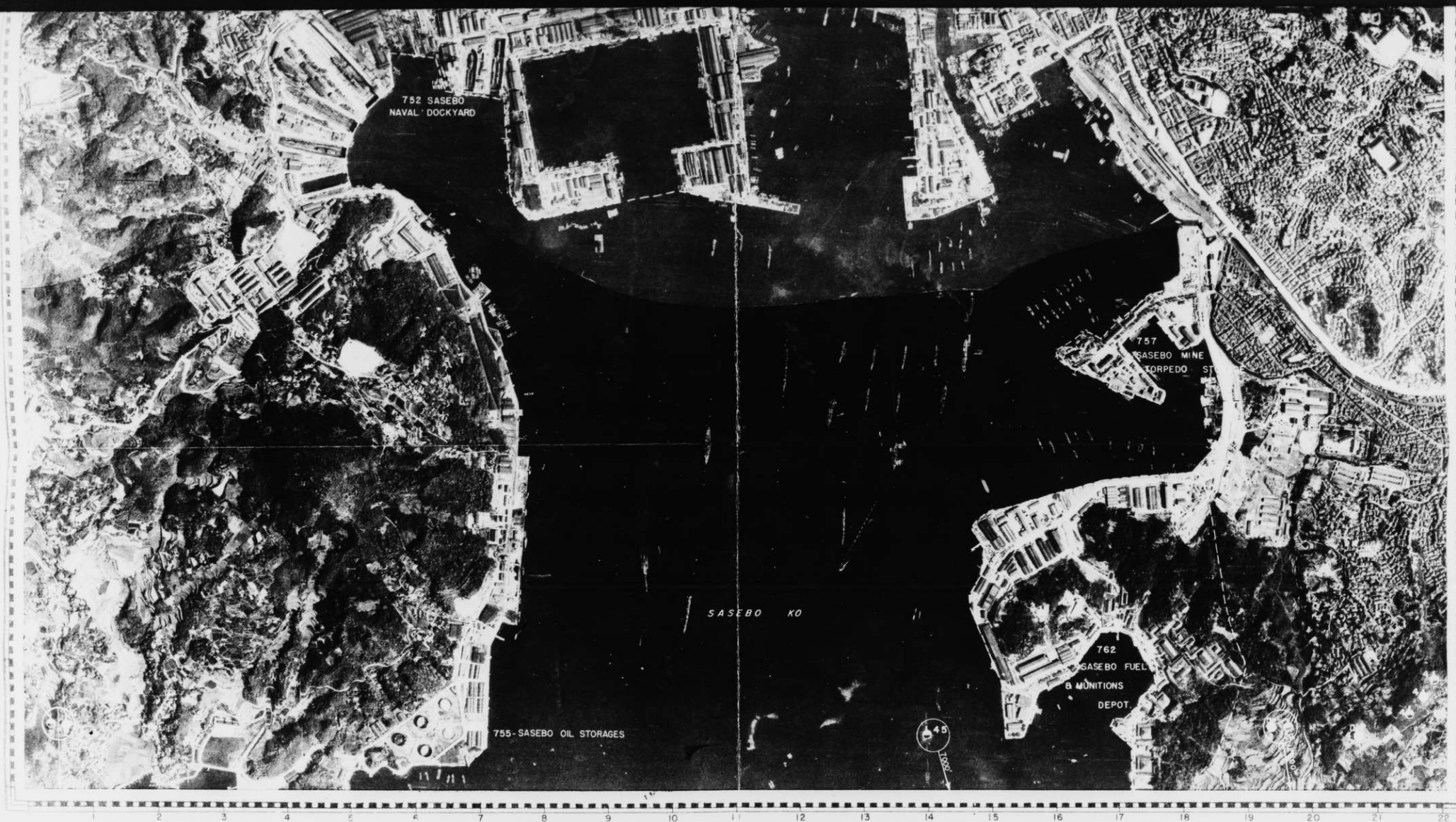


**SASEBO KO**  
SASEBO AREA, KYUSHU  
33° 10' N 129° 42' E

XXIBC 3PR5M180 30 April 1945  
500 0 500 1000 1500  
Approx. Scale in Feet

CONFIDENTIAL INTERPRON TWO-328.38







UNCONTROLLED MOSAIC  
OF  
**SASEBO KO - KYUSHU, JAPAN**  
PHOTOS BY XXI BOMBER COMMAND    SORTIE 3PR-5M180  
30 APRIL 1945  
CONFIDENTIAL    CINCPAC - CINCPAC

AIRCRAFT  
ASSEMBLY  
PLANT

FUEL STORAGE

REVETTED STORES

CV KASAGI

CVL

CV HAYATAKA

NAVAL AIR  
STATION

FUEL & MUNITIONS DEPOT

SASEBO

RR STATION

MINE & TORPEDO  
DEPOT

STORES  
BASIN

NAVAL ARSENAL &  
ENGINEERING DEPT.

REPAIR BASIN

COAL YARD

NAVAL DOCKYARD

OIL STORAGE

SASEBO KO

HARBOR ENTRANCE

MIZUSHIMA HANA

0 1 2 3 4 5 6 7 8 9 10 11 12 13 14 15 16 17 18

16 15 14 13 12 11 10 9 8 7 6 5 4 3 2 1 0

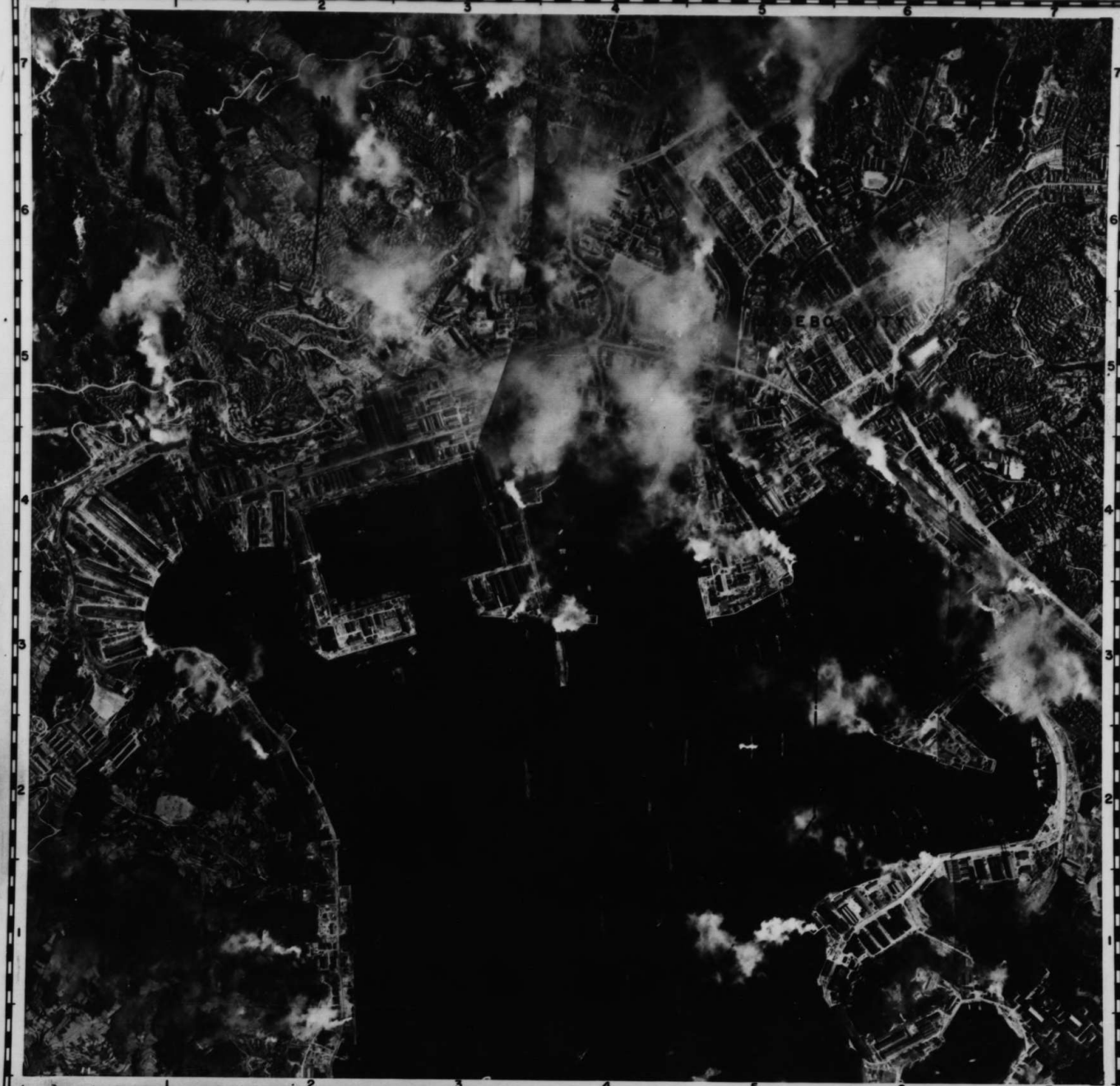


CONFIDENTIAL

28 PR5MA 180

20 JUNE 1945

INTERPRON TWO-186573 A



33°09'N 129°43'E

SASEBO, KYUSHU

90.36

SASEBO NAVAL BASE

90. 36 - Sasebo Harbor

31 SASEBO HARBOR (33/10/00 N--129/40/15 E) Ship count (Incomplete coverage)

Numerous probable landing craft - 1 MV over 200'. Further identification impossible due to haze.

Reference 1: M-3  
No prints attached

*S. R. 44 - dated 13 mar. 45 - flown 7 mar. 45 - 21 B.C.*

3. At mouth of inner harbor is sand bar covered at high tide. (Does not show in folder) Channel to west fairly narrow, but deep and 2 large battleships can pass through together. Channel to east is wider but shallower, cruisers can pass but not battleships. Warships always moored at space near arsenal; subs farther to the right and west of warship mooring.--JICA/CBI Oct. 4, 1944 PW.

4. Channel between Koga Point and Kompira Point at mouth of bay has booms and mines, and is marked by flagged buoys and is about 150 meters wide.--POW.

Sasebo Naval Base (33/08 N., 129/43 E) Shipping

Naval: 22

(1 M/V over 200' on 9 March 1945)  
Incomplete coverage  
(6" coverage)

- 1 CV, probable Hayataka Class - 745'
- 1 CVE, probable - about 500' (6" coverage)
- 2 DD, Teratsuki Class - 435'
- 1 DD, Asashio Class - 361'
- 1 DD, Fubiki Class - 379'
- 1 DD, unidentified - 420'
- 4 DD, unidentified - about 270' (6" coverage)
- 1 SS, RO-51 Class - 232'
- 2 Otori Class Escorts - 268'
- 1 Shimushu Class Escort - 220'
- 1 Escort, unidentified - 240'
- 1 PT Boat, unidentified - 220'
- Numerous other small naval Craft

Merchant: 3 over 200'

Reference: ONI 222-J and ONI 208-J (Revised) Supplement 3

Reference prints 2: 43-46, 4L: 61-63 and LVP 43,44

Last previous report - CIU S/R 44

No prints attached.

(From: S/R 82 - dated 15 April. 45 - flown 11 Apr. 45 - 21 B.C.)

CONFIDENTIAL

XXI BC 3PR5M 312

2 JULY 1945

INTERPRON TWO-186.572A



33° 07' N. -129° 45' E.

SASEBO, KYUSHU

90 36. SHIPPING TARGETS

CONFIDENTIAL

XXI BC 3PR5M 152

21 APRIL 1945

INTERPRON TWO-186.572B



33° 09' N. - 129° 43' E.

SASEBO, KYUSHU

90.36. SASEBO BAY



Sasebo & vicinity

Naval: 9 (22 on 11 Apr. 45)

- 4 DD's, unidentified - 440', 400', 435', 365'
- 2 LSM, unidentified 270'
- 2 CM, unidentified - 250'
- 1 SS, unidentified - 230'

Other naval units are present, but haze makes further interpretation impossible.

Merchant: 1 Type A - 444' (3 on 11 Apr 45)

Last previous Report CIU S/R 82

No prints attached.

(From: S/R 93 - dated 22 Apr. 45 - flown 16 Apr. 45 - 21 BC)

(Continued from above)

Naval: 3 (no previous coun )

- 1 CV, Hayataka Calass - 745'
- 1 CV, Unryu Class - 745'
- 1 CVL, Ryuho - 680'

Carriers in process of being camouflaged - Hayataka completely covered.

Merbhant None:

Naval: 8 (9 on 16 Apr. 45)

- 1 DD - unidentified
- 1 DD - possible
- 1 DE - unidentified
- 4 CM - unidentified
- 1 SS - unidentified

Numerous small naval vessels present

Merchant: 2 over 200' (1 on 16 Apr. 45)

Last previous report - CIU S/R 93

Reference prints 2: 53-55

(From: S/R 99 - dated 25 Apr. 45 - flown 21 Apr. 45 - 21 BC)

Sasebo Naval Base - vicinity

Naval: 3 (3 on 16 Apr. 45)

- 1 CV, Hayataka Class
- 1 CV, Unryu Class
- 1 CVL, Ryuho Class

Two are under net camouflage  
bouys are being placed for the other.

Merchant: None (None on 16 Apr. 45)

Last previous report - CIU S/R 93

Reference prints 2: 49-50 and 4L: 79 - 80

(From: S/R 99 - dated 25 Apr. 45 - flown 21 Apr. 45 - 21 BC)

P3

T

Sasebo & Vicinity

(30 Apr. 45)

32 Naval Vessels  
11 Merchant vessels (21,970 GT)

43

NV		MV	
2 CV	11 DE	1 FTB	1 TS
1 CVE	1 PC	1 FTD	4 SCS
1 OCA	7 SS	1 FTC	1 Barge
6 DD	3 Unidentified	1 SCL	1 SBS

21 Apr 45)

11 Naval Vessels  
2 Merchant vessels  
13

NV		MV
2 CV	1 DE	2 Unidentified
1 CVE	4 CM	
2 ID	1 SS	

(From: Shipping Report 4 - dated 8 May 45 - flown 30 Apr. 45 21 BC)

SASEBO HARBOR: Harbor 75 percent cloud covered. Naval: 20.  
Merchant: None visible.

NV:	1 CVL, IBUKI	MV: None
	1 CV, KASAGI	
	9 SS; 4 on ways, 3 in dockyard,	
	2 at anchor	
	2 LST	
	3 DE; 2 in drydock, 1 at anchor	
	3 PC	
	1 DD, probable	

Reference photos: 2:27-33.

(From: S/R 183 - 30 June 1945 - flown 25 June 1945 - 21 BC)

SASEBO HARBOR:

NAVAL VESSELS

24

Annotation	Type	Length	Remarks
1	CV	712	Possible UNRYU class. Only one of three in this area not camouflaged.

Annotation	Type	Length	Remarks
2	CVE	640	Possible RYUHO class. Vessel has been camouflaged with a net and dummy buildings.
3	CV	740	Possible HAYATA class. Camouflaged with net.
4	SS	260	Possible SS with square stern.
5	DD	400	
6	DD	365	
7	OCA	440	Probable ASAMA class.
8	DE	220	Probable PF-UN-2.
9	DE	230	
10	DE	220	Probable PF-UN-2.
11	DE	220	" "
12	DE	220	" "
13	DE	220	" "
14	DD	435	Probable TERUTSUKI class.
15	DE	220	Probable PF-UN-2.
16	PC	200	Probable sub chaser.
17	DD	300	Possible MATSU class, docked.
18	DE	220	Probable PF-UN-2 at fitting dock.
19	SS	373	Probable I-9 class being repaired.
20	DE	220	Possible PF-UN-2 in drydock.
21	DE	220	" " " "
22	DE	280	In drydock.
23	SS	160	" "
24	SS	160	" "
25	—	230 (Approx)	Unidentified; possible N/V, building.
26	—	250	" Unidentified; possible N/V, building.
27	—	280	" Unidentified; possible N/V, building.
28	SS	160	" Possible SS, building.
29	SS	160	" " " "
30	DD	435	Probable TERUTSUKI class, in drydock.
31	DD	300	In drydock - probable MATSU class.
32	SS	220	In drydock.

MERCHANT VESSELS

Annotation	Type	Length	Tonnage	Remarks
A	FTD	245	1800	
B	SCS	210	880	Type "E"
C	SCS	210	880	" "
D	SCS	210	880	" "
E	SCS	210	880	" "
F	—	495	—	Possible barge.
G	FTB	450	6700	
H	TS	210	850	
I	FTC	300	2200	
J	FTC	321	2700	Type "C"
K	SCL	310	2300	Type "D" modified.
L	SBS	295	1900	Type "D"
			21,970 Total	

CONFIDENTIAL

-3-

(From: Shipping Report 4 - dated 8 May 45 - flown 30 Apr. 45 - 21 BC)

## CONFIDENTIAL

Shipping Report No. 4  
Cont'd.

SHIMONOSEKI STRAITSNAVAL VESSELS

Type	Length	Remarks
Escort	230	Probable PF-UN-2 class.
DD	350	Unidentified; fitting out.
AM	225	No. 7 class (AM No. 7-12).
AM	225	" " "
AM	225	" " "
LST	264	Auxiliary transport.
LST	264	" " "
LST	264	" " "
Escort	220	Probable PF-UN-2 class.

MERCHANT VESSELS

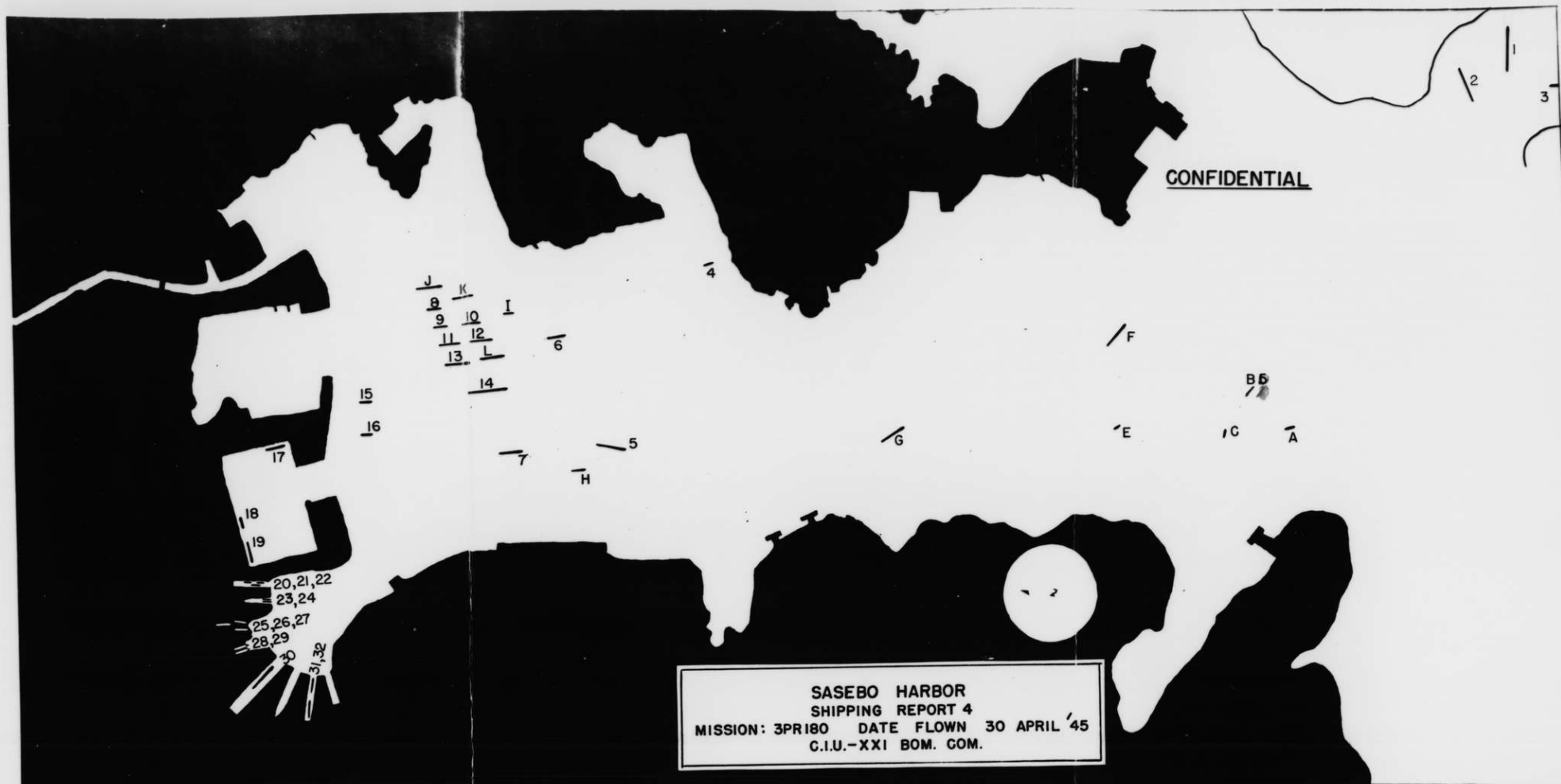
Type	Length	Tonnage	Remarks
SCS	210	880	Type E, anchored at W entrance to straits.
SCS	210	880	Type E, anchored at W entrance to straits.
FTC	315	2300	Type C, anchored at W entrance to straits.
SBL	445	6670	Type A, anchored at W entrance to straits.
SBL	445	6670	Type A, anchored at W entrance to straits.
SCS	210	880	Type E, anchored at W entrance to straits.
SCS	210	880	Type E, anchored at W entrance to straits.
FTC	285	2000	Type C, anchored at W entrance to straits.
TA	460	10000	Under way, approaching straits from W.
SCS	210	880	Type E, in boat basin at HIKO SHIMA.
SCS	210	880	Type E, anchored in straits.
SCS	210	880	" " " " "
SCS	210	880	" " " " "
SCS	210	880	" " " " "
SBL	445	6670	Type A, " " "
SCS	210	880	Type E, " " "
SCS	210	880	" " " " "
SCS	210	880	" " " " "
SCS	210	880	" " " " "
SCS	210	880	" " " " "
SCS	210	880	" " " " "
SCS	210	880	" " " " "
FTC	320	2700	Type C.
FTC	320	2700	" "
SCS	210	880	" E.
SCS	210	880	" E.
SCS	210	880	" E.
SCS	210	880	" E.
SCS	210	880	" E.

APC 234, c/o POSTMASTER  
SAN FRANCISCO, CALIFORNIA

(Combined PI Sections: 3rd Photo Recon Sqdn and 35th Photo Tech Unit)

8 May 1945







F44(3)  
Serial: I/060

UNITED STATES PACIFIC FLEET  
PHOTOGRAPHIC INTERPRETATION SQUADRON TWO

*Kent*  
*Geog Kent*  
JCN/rs

CONFIDENTIAL

5 May 1945

PHOTOGRAPHIC INTELLIGENCE REPORT NO. 620

SHIPPING REPORT: SASEBO HARBOR AND BAY, KYUSHU, JAPAN  
33° 08' N., 129° 43' E.

Based on XXI BomCom sortie 3PR5/180 of 30 April 1945.

References: (a) Interpron TWO T. I. Report No. 563 of 23 April 1945.  
(b) A.O.F. No. 90.36, Sasebo Area, 18 July 1944.

Coverage: Complete vertical 24" and partial 40" at 32,000'.

SUMMARY

NAVAL

2 CV-HAYATAKA and KASAGI.  
1 CVL - Unidentified.  
5 DD.  
9 SS.  
1 CM.  
1 CM-AM.  
10 FF.  
5 IC.  
1 LSM.

MERCHANT

20,300 g.t. operational - 9 ships.

DETAIL

NAVAL

No.	Type	Length(oa)	Remarks
1	CV	730-50	HAYATAKA, Camouflaged. Moored in Sasebo Bay.
1	CV	730-50	KASAGI, UNRYU class. Moored in Sasebo Bay.
1	CVL	680-700	Unidentified. Camouflaged since 16 April 1945. Moored in Sasebo Bay.
2	DD	435	TEFUTSUKI class. One in drydock. No. 1 mount removed.
1	DD	380-90	TAKANAMI class.
1	DD	340-50	HATSUHARU-SHIGURE class.
1	DD?	280-90	Probable KURI-WAKATAKE class. In drydock.
1	SS	370-80	
1	SS	245-55	Not operational.
1	SS	230-40	In drydock.
4	SS	150-60	Two in drydock. Two on ways.
2	SS	115-25	
1	CM	435-45	TOKINA.
1	CM-AM	240	
1	FF	270-80	Possible MIKURA class.
9	FF	220	KAIPOKAN. Two in drydock.
5	IC	160-70	Probable IC-13 class. One in drydock.
1	LSM	264	In drydock.

MERCHANT

No.	Type	Length(oa)	Gross Ton	Remarks
1	FT	440-50	7,000	
1	FT	320-30	3,000	
1	SCL	300-10	2,300	ANESHIWA MARU class.
1	SCL	280-90	2,000	
1	FT	28-90	2,000	
1	FT	230	1,200	
2	SAS	210	2,000	KORYU MARU class.
1	SCS	210	800	
2	Fuel Barges	200		Type X.

*R. De Lancia*  
R. De LANCIE,  
Commanding.

744(3)  
Serial: I/0180

UNITED STATES PACIFIC FLEET  
PHOTOGRAPHIC INTERPRETATION SQUADRON TWO

RSW/rs

CONFIDENTIAL

5 July 1945

PHOTOGRAPHIC INTELLIGENCE REPORT NO. 744

SHIPPING REPORT: SASEBO HARBOR AND BAY, KYUSHU, JAPAN  
33° 08' N., 129° 43' E.

Based on: XXI BomCom sortie 3PR5M312 of 2 JULY 1945.

References: (a) Interpron Two P. I. Report No: 733 of 1 July 1945.  
(b) L.O.F. No. 90.36, Sasebo Area, 18 July 1944.

SUMMARY

NAVAL

2 CV - KASAGI and HAYATAKA.  
1 CVL - Probable converted IBUKI.  
1 DD TERUTSUKI (repairing).  
1 DD (building).  
1 ODD.  
2 SS.  
5 SS (building, repairing).  
2 DE (repairing).  
1 CMC.  
2 AM.  
3 PF.  
2 PF (repairing).  
1 PC.  
1 APD.  
2 LSM.

MERCHANT

1,800 g.t. operational - 1 ship.  
Ships less than 200' not listed.

DETAIL

NAVAL

No.	Type	Length(oa)	Location*	Remarks
1	CV	730-50	S	HAYATAKA. Camouflage extended on flight deck and along starboard side.
1	CV	730-50	S	KASAGI-UNRYU class. Camouflage on flight deck extended. Protected by torpedo net.
1	CVL	680-700	S	Tentatively identified by O.N.I. as converted IBUKI. Partially protected by torpedo net.
1	DD	435	N	TERUTSUKI class. In graving dock.
1	DD	400-420	N	Probable DD building. Progress slow since 20 June 1945.
1	ODD	287	H	KURI-TAKATAKE class.
4	SS	160-170	P,N	Two in graving dock.
3-4	SS	160-170	N	Three possibly four, building. One moved to outboard end of way in preparation for launching.
2	DE	250-260	N	UN-1 class. Both in graving dock.
1	CMC	240-250	R	Probable SCOUTER class.
2	AM	230-240	N,R	One in graving dock.
5	PF	220	N,H	KAIKOKAN class. Two in graving dock.
1	PC	165-170	H	Probable PC-13 class.
1	APD	310-320	H	
2	LSM	264	H	

MERCHANT

No.	Type	Length(oa)	Gross Ton	Location*	Remarks
1	FT	230-240	1,800	H	



\*LOCATION

P - At pier off repair basin.  
R - Repair basin.  
N - Naval dockyard.  
H - Moored in harbor.  
S - Sasebo Bay, off Hario Shima.

NOTE

One PF (KAIBOKAN class) reported ready for launching on 20 June, has since been launched. One SS launched since 20 June 1945.

COVER/GE

70% vertical 24", and 40" of entire area at 30,000'. 90% cloud cover over repair basin.

*R. De Lancia*  
R. De LANCIE,  
Commanding.

F44(3)  
Serial: I/018

UNITED STATES PACIFIC FLEET  
PHOTOGRAPHIC INTERPRETATION SQUADRON TWO

LEA/krm

CONFIDENTIAL

23 April 1945.

PHOTOGRAPHIC INTELLIGENCE REPORT NO. 563

SHIPPING REPORT: SASEBO HARBOR and BAY, KYUSHU, JAPAN.  
33° 08' N., 129° 43' E.

Based on XXI BomCom sortie 3PR5M147 of 16 April 1945.

Reference: (a) A.O.F. No. 90.36, Sasebo area, 18 July 1944.

Coverage: Complete vertical 24" and partial 40" at 32,500'.

SUMMARY

NAVAL

2 CV-HAYATAKA and unit of UNRYU class.  
1 CVL-Unidentified.  
5 DD.  
4 SS.  
8 PF.  
7 PC.  
2 LSM.

MERCHANT

8900 g.t. operational - 2 ships.

DETAIL

NAVAL

NO.	TYPE	LENGTH(oa)	REMARKS
1	CV	730-50	UNRYU class. Probably same ship built and outfitted at Nagasaki. 16 April coverage of Nagasaki discloses CV no longer present. Moored in Sasebo Bay.
1	CV	730-50	HAYATAKA. Camouflaged with netting, details obscured. Moored in Sasebo Bay. Same position 11 April.
1	CVL	680-700	Unidentified. Flight deck 75-80' wide and covers entire hull. Possible small island on starboard side. Two elevators, platforms on deck. Moored in Sasebo Bay. Same position 11 April.
3	DD	430-40	TERUTSUKI class. One in drydock, same position 11 April. One moored in harbor; in drydock 11 April. One docked same position 11 April.
1	DD	375-85	TAKANAMI class. Moored in harbor. In drydock 11 April.
1	DD	340-50	HATSU HARU-SHIGURE class. Moored in harbor. In drydock 11 April.
1	SS	350-60	
1	SS?	250-60	
2	SS	230-40	
1	PF	270-80	Possible MIKURA class.
7	PF	220	KAIBOKAN.
7	PC	160-70	One in drydock.
2	LSM	264	In drydock.

MERCHANT

NO.	TYPE	LENGTH(oa)	GROSS TON	REMARKS
1	SBL	445	6600	BATAPAPA MARU class.
1	SCL	310	2300	AKESHIWA MARU class.

*R. De Lancia*  
R. De LANCIE,  
Commanding.

Kent

CONFIDENTIAL

C. I. U.  
TWENTIETH AIR FORCE  
APO 234, c/o POSTMASTER  
SAN FRANCISCO, CALIFORNIA

5 August 1945

SHIPPING REPORT 48

SASEBO HARBOR and VICINITY

Mission No.: 3PR5M 396

Target Area: Sasebo (90.36)

Date Flown: 29 July 1945

Naval: 34

Merchant: 1, operative, 1, 862 G.T.

2 CV 1 LST  
1 CVL 1 OCA  
1 DD 3 PF  
1 DE 2 PC  
2 ODD 5 XPC  
1 APD 3 AM  
11 SS

Arrivals: 5

Departures: 5

1 PC  
4 SS

2 PF  
1 LST  
1 DD  
1 DE

Last complete coverage: 2 July 1945, CIU Shipping Report 34.

Reference prints: 3: 56-65.

References: ONI 222J, 20 July 1944  
ONI 208J, Revised, Undated  
ONI 208J, Revised Supplement, 3 January 1945

Annotated and attached: harbor plan

TABULATION OF SHIPPING

Naval:

LOCATION	TYPE	LENGTH	REMARKS
1	CV	740'	Hayataka
2	CV	740'	Kasagi
3	CVL	670'	Converted Ibuki
4	SS	225'	
5	APD	320'	Numbered naval transport
6	PF	220'	Kaibokan class
7	PF	220'	Kaibokan class
8	ODD	207'	Kuri-Takatake class
9	DE	260'	DE UN-1
10	PF	220'	Kaibokan class
11	XPC	136'	
12	XPC	136'	
13	XPC	136'	
14	PC	180'	PC 4 class
15	SS	145'	
16	SS	145'	
17	SS	145'	
18	XTC	100'	
19	SS	145'	
20	SS	145'	
21	XTC	130'	
22	SS	145'	

CONFIDENTIAL

CONFIDENTIAL

Shipping Report 48, Cont'd.

LOCATION	TYPE	LENGTH	REMARKS
23	AM	230'-240'	Fitting
24	AM	230'-240'	Fitting
25	SS	230'	In drydock
26	LST	265'	HA class
27	AM	240'-250'	Fitting; in drydock
28	PC	170'	PC-13 class
29	SS	180'	
30	SS	145'	
31	SS	145'	

Not included in the above listing or shown on attached harbor plan are the following units:

DD	435'	Terutsuki class. No's 1 & 2 turrets removed.
OCA	420'	Probable Asama
ODD 2	290'	Hull

The above units are located in the vicinity of and NE of Sasebo.

MERCHANT:

LOCATION	TYPE	LENGTH	TONNAGE
A	FTC	395'	4,862

Approved: *Hamilton D. Darcy*  
 HAMILTON D. DARCY,  
 MAJOR, MC

DISTRIBUTION: "B"

CONFIDENTIAL



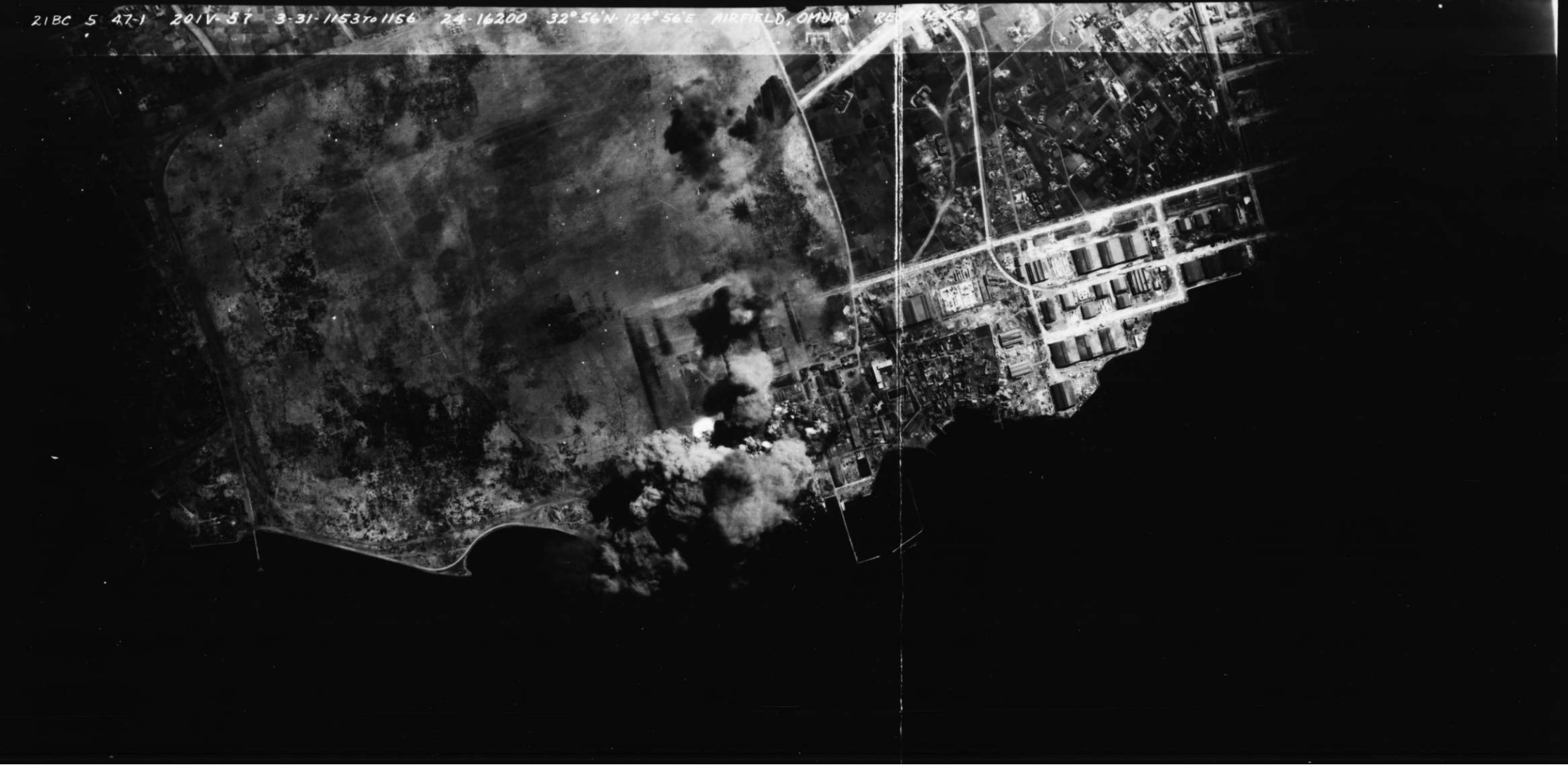


SASEBO HARBOR  
SHIPPING REPORT NO. 48  
Mission 3PR5M366  
Date of Photography 29 July 45  
C.I.U. Twentieth Air Force  
CONFIDENTIAL

21BC 5 471 201V 58 3-5N 115E 21156 24 16200 32 56N 124 58E AIRFIELD ONLY RESTRICTED



21BC 5 47-1 201V 57 3-31-115370 1156 24-16200 32°56'N 124°56'E AIRFIELD, OMURA RE





SASEBO S. S., TARGET 2539  
SASEBO A/F, TARGET 754

KYUSHU, JAPAN  
33° 07' N. 129° 44' E.

XXI BC 3PR5MI52 of 21 April 1945.

*1-317*



SASEBO KO

PROBABLE REPAIR  
DEPOT

PROBABLE UNDERGROUND  
STORAGE

SASEBO FUEL &  
762 MUNITIONS DEPOT

BARRACKS AREA

754 SASEBO NAVAL AIR STATION

2539 SASEBO S.S.

834 SASEBO AIRCRAFT FACTORY

MILITARY STORES

SASEBO WAN

TAKU ISLAND

**SASEBO S. S., TARGET 2539**  
**SASEBO A/F, TARGET 754**

1, B7  
KYUSHU, JAPAN

33° 07' N. 129° 44' E.

XXI BC 3PR5MI52 of 21 April 1945.

1000 0 1000 2000

Approx. Scale in Feet

CONFIDENTIAL INTERPRON TWO 328.13

SASEBO U/A