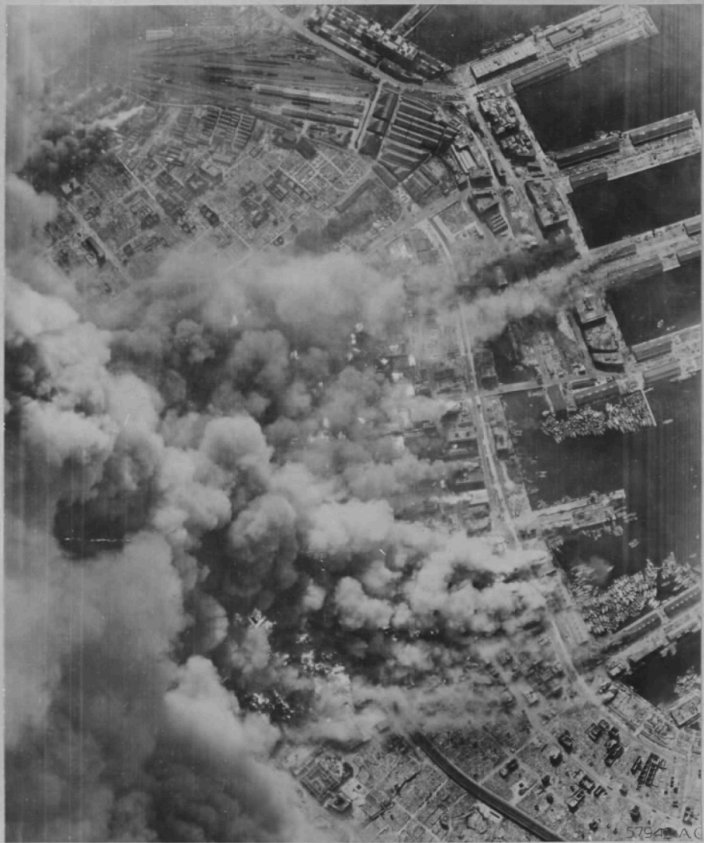


Print rec'd 9 July 1945 from BPR to accompany Press Release,  
"SUPERFORTRESS TARGETS". Copied 10 July 1945.

A3497



War Theatre #11 (Kobe, Japan) BOMBING (over)

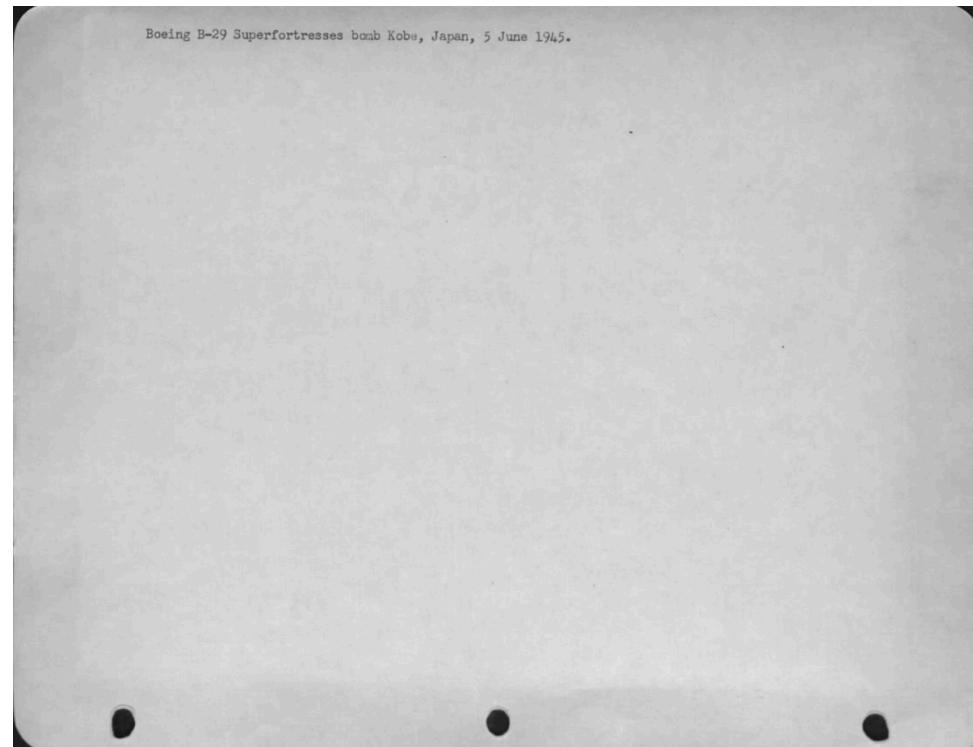
SUPERFORTRESS TARGET - B-29's of the 20th Air Force are pacing the mounting air assaults against Japan. Burned-out areas in Japanese cities now total more than 126 square miles. In this picture the important naval base of Kobe is seen aflame as the result of a recent Superfortress attack. (June 5, 1945.)

War Theatre #11 (Kobe, Japan) BOMBING  
(over)

Print rec'd August 1945 from Publications  
Sec. AC/AS Intelligence. Used in August 1945  
issue of "IMPACT". Copied 27 August 1945.  
Released - 17 September 1945.



Boeing B-29 Superfortresses bomb Kobe, Japan, 5 June 1945.



War Theatre #11 (Kobe, Japan)  
BOMBING

(over) Print rec'd 25 June 1945 from BPR. Copied  
25 June 1945. Stamped "No obj. to pub., BPR  
9 July 1945 - (1) WD."



Damage to Kobe, Japan. 5 June 1945.

War Theatre #11 (Kobe, Japan) BOMBING  
(over)

Neg. rec'd 1 September 1945 from RFR to  
accompany Press Release, "KOBÉ, JAPAN".



13500

158496A  
+58496A

Damaged Japanese planes dot an airfield near Kobe, Japan, as the result of fighter sweeps and B-29 attacks by the U.S. Army Air Forces prior to Japan's capitulation.



War Theatre #11 (Kobe, Japan)

BOMBING

(OVER)

Print rec'd 9 Nov. 45 from BPR, (Air Forces Group). Used in book, "Third Report of the C.G. of the AAF to the Secretary of War". Copied 13 November 1945.



A3503

58995AC

Kobe, a principal Japanese shipping center, was nearly 60% destroyed by B-29's which dropped 5,424 tons of incendiaries.

War Theatre #11 - Kobe, Japan - BOMBING

Neg. and print rec'd 1 September 1945 from  
20th Air Force. Released 26 Oct. 1945.

(over)



A3501

58668 A.C.  
58668 AC

INDEXED

Kobe, Japan, showing bomb damage caused by repeated Boeing B-29 attacks.

War Theatre #11 (Kobe, Japan)  
BOMBING

(over)

Print rec'd 25 June 1945 from BFR. Copied  
25 June 1945. Stamped: "No obj. to pub., BFR  
9 July 1945. - (1) WD."



57817A.C

A3494

Kobe, Japan.

War Theatre #11 (Kobe, Japan)  
BOMBING

(OVER)

Neg. and print rec'd 1 September 1945 from  
20th Air Force. Released, 26 October 1945.



A3502

A-58668 A.C.

17-58668A.C.

Kobe, Japan, showing bomb damage.

War Theatre #11 (Kobe, Japan)  
BOMBING

Print rec'd 25 June 1945 from EPR. Copied  
(over) 25 June 1945. Stamped: "No obj. to pub., EPR"  
9 July 1945 - (1) WD.

POST STRIKE  
KOBE  
XXI BOM. COM. MISSION 188  
5 JUNE 1945



A-57817AC  
R-57817AC.

A3495

Post-strike photo of Kobe, Japan. 5 June 1945.



War Theatre #11 (Kobe, Japan)

BOMBING

Strike attack Kobe, Japan, 5 June 1945.



58076 A C

Rec'd July, 1945 from AC/AS Intelligence.  
Evaluation Section. Copied 7/25/45. Released/  
30 July 1945/Capt. Gardiner.

A3498

Print rec'd June, 1945 from AC/AS Intelligence Evaluation  
Unit. Copied 21 June 1945. Released 7-7-45



57755 A C

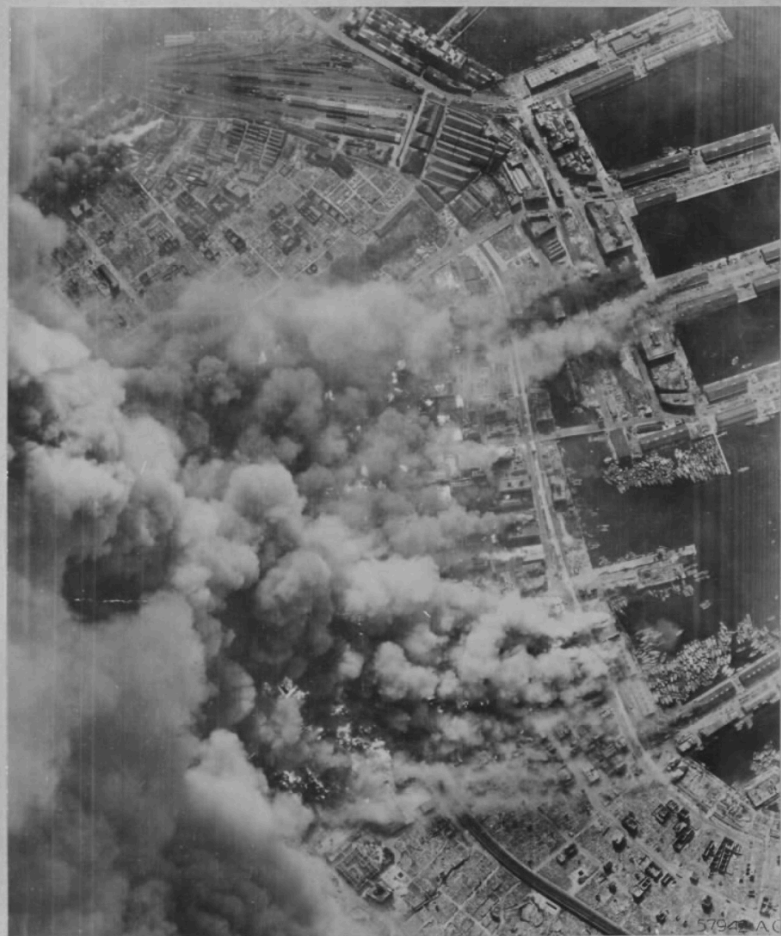
Strike Photo - Kobe, Japan - June 5, 1945.

War Theatre #11 (Kobe, Japan) BOMBING



Print rec'd 9 July 1945 from BFR to accompany Press Release,  
"SUPERFORTRESS TARGETS". Copied 10 July 1945.

A3497



57942 HC

War Theatre #11 (Kobe, Japan) BOMBING (over)

SUPERFORTRESS TARGET - B-29's of the 20th Air Force are pacing the mounting air assaults against Japan. Burned-out areas in Japanese cities now total more than 126 square miles. In this picture the important naval base of Kobe is seen aflame as the result of a recent Superfortress attack. (June 5, 1945.)

46  
Print rec'd 13 June 1945 from Print Library, AAF. Copied 13 June 1945.  
Released 16 June 1945 - Capt. Gardiner

A3492



**INDEXED**

*✓ Bombing - incendiary  
✓ Bombing - incendiary*

SUPERFORTS SHOWER INCENDIARIES ON KOBE -- Incendiary bombs from Boeing B-29s rain down on Kobe, Japan's sixth largest city. This incendiary attack June 5, 1945 was the third carried out by the Superfortresses on the city. Fires already are burning in the commercial dock area.

War Theatre #11 (Kobe, Japan) BOMBING



A9436